

**bsm-33434M****[ Primary Antibody ]****SRC Mouse mAb****BioSS**  
**ANTIBODIES**

www.bioss.com.cn

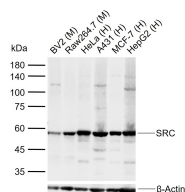
sales@bioss.com.cn

techsupport@bioss.com.cn

400-901-9800

**— DATASHEET —**

<b>Host:</b> Mouse <b>Clonality:</b> Monoclonal <b>GeneID:</b> 6714 <b>Target:</b> SRC <b>Purification:</b> affinity purified by Protein A <b>Concentration:</b> 1mg/ml <b>Storage:</b> Size : 50ul/100ul/200ul 0.01M TBS (pH7.4) with 1% BSA, 0.02% Proclin300 and 50% Glycerol. Size : 200ug (PBS only) 0.01M PBS Shipped at 4°C. Store at -20°C for one year. Avoid repeated freeze/thaw cycles. <b>Background:</b> This gene is highly similar to the v-src gene of Rous sarcoma virus. This proto-oncogene may play a role in the regulation of embryonic development and cell growth. The protein encoded by this gene is a tyrosine-protein kinase whose activity can be inhibited by phosphorylation by c-SRC kinase. Mutations in this gene could be involved in the malignant progression of colon cancer. Two transcript variants encoding the same protein have been found for this gene. [provided by RefSeq, Jul 2008]	<b>Isotype:</b> IgG1 <b>CloneNo.:</b> 3D7 <b>SWISS:</b> P12931	<b>Applications:</b> WB (1:500-2000) <b>Reactivity:</b> Human, Mouse (predicted: Rat)  <b>Predicted MW.:</b> 61 kDa <b>Subcellular Location:</b> Cell membrane ,Cytoplasm ,Nucleus
---	--	---

**— VALIDATION IMAGES —**

Sample: Lane 1: Mouse BV2 cell lysates Lane 2: Mouse Raw264.7 cell lysates Lane 3: Human HeLa cell lysates Lane 4: Human A431 cell lysates Lane 5: Human MCF-7 cell lysates Lane 6: Human HepG2 cell lysates Primary: Anti-SRC (bsm-33434M) at 1/1000 dilution Secondary: IRDye800CW Goat Anti-Mouse IgG at 1/20000 dilution Predicted band size: 61 kDa Observed band size: 58 kDa