

**bs-20231R****[ Primary Antibody ]****Collagen X Rabbit pAb****BioSS**  
**ANTIBODIES**

www.bioss.com.cn

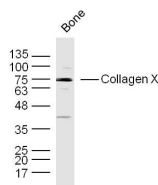
sales@bioss.com.cn

techsupport@bioss.com.cn

400-901-9800

**— DATASHEET —**

<b>Host:</b> Rabbit	<b>Isotype:</b> IgG	<b>Applications:</b> WB (1:500-2000)
<b>Clonality:</b> Polyclonal		<b>Reactivity:</b> Mouse (predicted: Human)
<b>GeneID:</b> 1300	<b>SWISS:</b> A1L4P2	
<b>Target:</b> Collagen X		
<b>Immunogen:</b> KLH conjugated synthetic peptide derived from human Collagen X : 24-100/680.		<b>Predicted MW.:</b> 73 kDa
<b>Purification:</b> affinity purified by Protein A		<b>Subcellular Location:</b> Extracellular matrix
<b>Concentration:</b> 1mg/ml		
<b>Storage:</b> 0.01M TBS (pH7.4) with 1% BSA, 0.02% Proclin300 and 50% Glycerol. Shipped at 4°C. Store at -20°C for one year. Avoid repeated freeze/thaw cycles.		
<b>Background:</b> This gene encodes the alpha chain of type X collagen, a short chain collagen expressed by hypertrophic chondrocytes during endochondral ossification. Unlike type VIII collagen, the other short chain collagen, type X collagen is a homotrimer. Mutations in this gene are associated with Schmid type metaphyseal chondrodysplasia (SMCD) and Japanese type spondylometaphyseal dysplasia (SMD). [provided by RefSeq, Jul 2008].		

**— VALIDATION IMAGES —**

Sample: bone (Mouse) Lysate at 40 ug Primary:  
Anti-Collagen X(bs-20231R) at 1/300 dilution  
Secondary: IRDye800CW Goat Anti-Rabbit IgG at  
1/20000 dilution Predicted band size: 73 kD  
Observed band size: 73 kD