

**bs-22935R****[ Primary Antibody ]****Bioss**  
ANTIBODIES

www.bioss.com.cn

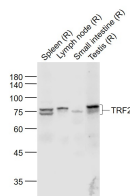
sales@bioss.com.cn

techsupport@bioss.com.cn

400-901-9800

**TRF2 Rabbit pAb****— DATASHEET —**

<b>Host:</b> Rabbit	<b>Isotype:</b> IgG	<b>Applications:</b> WB (1:500-2000)
<b>Clonality:</b> Polyclonal		<b>Reactivity:</b> Rat
<b>GeneID:</b> 7014	<b>SWISS:</b> Q15554	
<b>Target:</b> TRF2		
<b>Immunogen:</b> KLH conjugated synthetic peptide derived from human TRF2: 251-350/500.		<b>Predicted MW.:</b> 55 kDa
<b>Purification:</b> affinity purified by Protein A		<b>Subcellular Location:</b> Nucleus
<b>Concentration:</b> 1mg/ml		
<b>Storage:</b> 0.01M TBS (pH7.4) with 1% BSA, 0.02% Proclin300 and 50% Glycerol. Shipped at 4°C. Store at -20°C for one year. Avoid repeated freeze/thaw cycles.		
<b>Background:</b> This gene encodes a telomere specific protein, TERF2, which is a component of the telomere nucleoprotein complex. This protein is present at telomeres in metaphase of the cell cycle, is a second negative regulator of telomere length and plays a key role in the protective activity of telomeres. While having similar telomere binding activity and domain organization, TERF2 differs from TERF1 in that its N terminus is basic rather than acidic. [provided by RefSeq, Jul 2008]		

**— VALIDATION IMAGES —**

Sample: Lane 1: Spleen (Rat) Lysate at 40 ug  
Lane 2: Lymph node (Rat) Lysate at 40 ug Lane 3:  
Small intestine (Rat) Lysate at 40 ug Lane 4:  
Testis (Rat) Lysate at 40 ug Primary: Anti-TRF2  
(bs-22935R) at 1/1000 dilution Secondary:  
IRDye800CW Goat Anti-Rabbit IgG at 1/20000  
dilution Predicted band size: 68 kD Observed  
band size: 72 kD