

bs-20005R**[Primary Antibody]****Bioss**
ANTIBODIES

www.bioss.com.cn

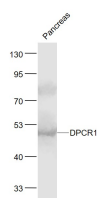
sales@bioss.com.cn

techsupport@bioss.com.cn

400-901-9800

DPCR1 Rabbit pAb**— DATASHEET —**

Host: Rabbit	Isotype: IgG	Applications: WB (1:500-2000)
Clonality: Polyclonal		Reactivity: Mouse (predicted: Rat)
Target: DPCR1		
Immunogen: KLH conjugated synthetic peptide derived from mouse DPCR1: 51-150/517. < Extracellular >		Predicted MW.: 51 kDa
Purification: affinity purified by Protein A		Subcellular Location: Cell membrane
Concentration: 1mg/ml		
Storage: 0.01M TBS (pH7.4) with 1% BSA, 0.02% Proclin300 and 50% Glycerol. Shipped at 4°C. Store at -20°C for one year. Avoid repeated freeze/thaw cycles.		
Background: DPCR1 is a 517 amino acid single-pass type I membrane protein that exists as 2 alternatively spliced isoforms. Expressed in adult small intestine, uterus, esophagus, lung, kidney, testis, rectum, stomach, cervix and skin, DPCR1 has also been observed in fetal kidney, lung and heart. The gene encoding DPCR1 maps to a region on chromosome 6 that is shared by seven other genes, which have been linked to diffuse panbronchiolitis. Chromosome 6 contains 170 million base pairs and comprises nearly 6% of the human genome. Deletion of a portion of the q arm of chromosome 6 is associated with early onset intestinal cancer, suggesting the presence of a cancer susceptibility locus. Additionally, Porphyria cutanea tarda, Parkinson's disease, Stickler syndrome and a susceptibility to bipolar disorder are all associated with genes that map to chromosome 6.		

— VALIDATION IMAGES —

Sample: Pancreas (Mouse) Lysate at 40 ug
Primary: Anti- DPCR1 (bs-20005R) at 1/1000
dilution Secondary: IRDye800CW Goat Anti-
Rabbit IgG at 1/20000 dilution Predicted band
size: 51 kD Observed band size: 51 kD