

bs-23128R**[Primary Antibody]****CD163 Rabbit pAb****BioSS**
ANTIBODIES

www.bioss.com.cn

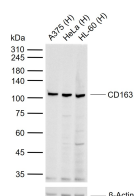
sales@bioss.com.cn

techsupport@bioss.com.cn

400-901-9800

— DATASHEET —

Host: Rabbit Clonality: Polyclonal GeneID: 9332 Target: CD163 Immunogen: KLH conjugated synthetic peptide derived from human CD163: 101-200/1156. < Extracellular > Purification: affinity purified by Protein A Concentration: 1mg/ml Storage: 0.01M TBS (pH7.4) with 1% BSA, 0.02% Proclin300 and 50% Glycerol. Shipped at 4°C. Store at -20°C for one year. Avoid repeated freeze/thaw cycles. Background: The protein encoded by this gene is a member of the scavenger receptor cysteine-rich (SRCR) superfamily, and is exclusively expressed in monocytes and macrophages. It functions as an acute phase-regulated receptor involved in the clearance and endocytosis of hemoglobin/haptoglobin complexes by macrophages, and may thereby protect tissues from free hemoglobin-mediated oxidative damage. This protein may also function as an innate immune sensor for bacteria and inducer of local inflammation. Alternatively spliced transcript variants encoding different isoforms have been described for this gene. [provided by RefSeq, Aug 2011]	Isotype: IgG SWISS: Q86VB7	Applications: WB (1:500-2000) Reactivity: Human (predicted: Mouse, Rat) Predicted MW.: 121 kDa Subcellular Location: Secreted ,Cell membrane
---	---	---

— VALIDATION IMAGES —

Sample: Lane 1: Human A375 cell lysates Lane 2: Human HeLa cell lysates Lane 3: Human HL-60 cell lysates
Primary: Anti-CD163 (bs-23128R) at 1/1000 dilution
Secondary: IRDye800CW Goat Anti-Rabbit IgG at 1/20000 dilution
Predicted band size: 121 kDa
Observed band size: 105 kDa

— SELECTED CITATIONS —

- **[IF=3.509]** Xin Shan. et al. Proteomic analysis of healthy and atretic porcine follicular granulosa cells. J Proteomics. 2021 Feb;232:104027 WB ;Fig. 33130110