

GLRA4 Rabbit pAb

Catalog Number: bs-12089R

Target Protein: GLRA4

Concentration: 1mg/ml

Form: Liquid

Host: Rabbit

Clonality: Polyclonal

Isotype: IgG

Applications: WB (1:500-2000)

Reactivity: Mouse

Predicted MW: 45 kDa

Subcellular: Cytoplasm

Locations:

Swiss Prot: Q61603

Source: KLH conjugated synthetic peptide derived from mouse GLRA4: 31-130/455.

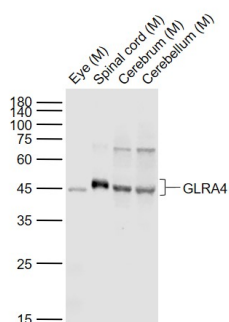
Purification: affinity purified by Protein A

Storage: 0.01M TBS (pH7.4) with 1% BSA, 0.02% Proclin300 and 50% Glycerol.

Shipped at 4°C. Store at -20°C for one year. Avoid repeated freeze/thaw cycles.

Background: The glycine receptor is a neurotransmitter-gated ion channel. Binding of glycine to its receptor increases the chloride conductance and thus produces hyperpolarization (inhibition of neuronal firing).

VALIDATION IMAGES



Sample: Lane 1: Eye (Mouse) Lysate at 40 ug Lane 2: Spinal cord (Mouse) Lysate at 40 ug Lane 3: Cerebrum (Mouse) Lysate at 40 ug Lane 4: Cerebellum (Mouse) Lysate at 40 ug Primary: Anti-GLRA4 (bs-12089R) at 1/500 dilution Secondary: IRDye800CW Goat Anti-Rabbit IgG at 1/20000 dilution Predicted band size: 48 kD Observed band size: 45 kD