

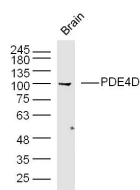
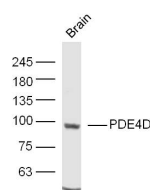
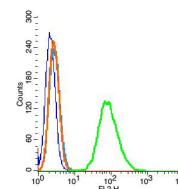
**bs-1325R****[ Primary Antibody ]****PDE4D Rabbit pAb****Bioss**  
**ANTIBODIES**

www.bioss.com.cn

sales@bioss.com.cn

techsupport@bioss.com.cn

400-901-9800

**— DATASHEET —****Host:** Rabbit**Isotype:** IgG**Clonality:** Polyclonal**GeneID:** 5144**SWISS:** Q08499**Target:** PDE4D**Immunogen:** KLH conjugated synthetic peptide derived from human PDE4D: 401-550/809.**Purification:** affinity purified by Protein A**Concentration:** 1mg/ml**Storage:** 0.01M TBS (pH7.4) with 1% BSA, 0.02% Proclin300 and 50% Glycerol.  
Shipped at 4°C. Store at -20°C for one year. Avoid repeated freeze/thaw cycles.**Background:** Cyclic AMP-dependent phosphodiesterase type D (PDE4D) family is comprise of 5 variants (PDE4D1, D2, D3, D4 and D5). One or more PDE4D subtype variants are ubiquitously present in all mammalian cells. In CNS all five PDE4D subtype variants are expressed in varying ratios and their activity is regulated in tandem with GPCRs stimulation. Peripheral tissues also exhibit differential expression of PDE4D variants. PDE4D1/D2 mRNA levels rise in response to an increase in cAMP. Short term regulation of PDE4D variants involved PKA, MAP kinases and Erk2 phosphorylation that results in rapid change in their enzymatic activities. Other regulatory mechanism involved protein protein interactions with cytoskeletal scaffolding proteins.**Applications:** **WB** (1:500-2000)**Flow-Cyt** (1µg/Test)**Reactivity:** Mouse, Rat  
(predicted: Human, Rabbit, Pig, Cow, Dog, Horse)**Predicted**  
**MW.:** 90 kDa**Subcellular**  
**Location:** Cell membrane ,Cytoplasm**— VALIDATION IMAGES —**Sample: Brain(Mouse) Lysate at 30 ug Primary:  
Anti-PDE4D (bs-1325R) at 1/300 dilution  
Secondary: IRDye800CW Goat Anti-Mouse IgG at  
1/20000 dilution Predicted band size: 90 kD  
Observed band size: 100 kDSample: Brain(Mouse) Lysate at 30 ug Primary:  
Anti-PDE4D (bs-1325R) at 1/300 dilution  
Secondary: IRDye800CW Goat Anti-Mouse IgG at  
1/20000 dilution Predicted band size: 90 kD  
Observed band size: 90kD

Blank control: RSC96(blue), the cells were fixed with 2% paraformaldehyde (10 min) and then permeabilized with ice-cold 90% methanol for 30 min on ice.. Isotype Control Antibody: Rabbit IgG(orange) ; Secondary Antibody: Goat anti-rabbit IgG-FITC(white blue), Dilution: 1:200 in 1 X PBS containing 0.5% BSA ; Primary Antibody Dilution: 1µg in 100 µg/L 1X PBS containing 0.5% BSA(green).