

## Alx1 Rabbit pAb

Catalog Number: bs-20404R

Target Protein: Alx1

Concentration: 1mg/ml

Form: Liquid

Host: Rabbit

Clonality: Polyclonal

Isotype: IgG

Applications: WB (1:500-2000), IHC-P (1:100-500), IHC-F (1:100-500), IF (1:100-500)

Reactivity: Human, Mouse, Rat (predicted:Rabbit, Cow, Dog, Horse)

Predicted MW: 37 kDa

Entrez Gene: 8092

Swiss Prot: Q15699

Source: KLH conjugated synthetic peptide derived from human Alx1: 231-326/326.

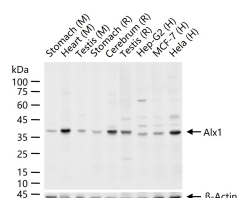
Purification: affinity purified by Protein A

Storage: Preservative: 0.02% Proclin300, Constituents: 1% BSA, 0.01M PBS, pH7.4.

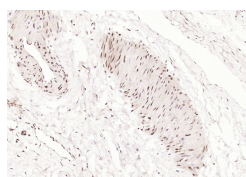
Shipped at 4°C. Store at -20°C for one year. Avoid repeated freeze/thaw cycles.

**Background:** The specific function of this gene has yet to be determined in humans; however, in rodents, it is necessary for survival of the forebrain mesenchyme and may also be involved in development of the cervix. Mutations in the mouse gene lead to neural tube defects such as acrania and meroanencephaly. [provided by RefSeq, Jul 2008].

### VALIDATION IMAGES



25 ug total protein per lane of various lysates (see on figure) probed with Alx1 polyclonal antibody, unconjugated (bs-20404R) at 1:1000 dilution and 4°C overnight incubation. Followed by conjugated secondary antibody incubation at r.t. for 60 min.



Paraformaldehyde-fixed, paraffin embedded (human cervical); Antigen retrieval by boiling in sodium citrate buffer (pH6.0) for 15min; Block endogenous peroxidase by 3% hydrogen peroxide for 20 minutes; Blocking buffer (normal goat serum) at 37°C for 30min; Antibody incubation with (Alx1) Polyclonal Antibody, Unconjugated (bs-20404R) at 1:400 overnight at 4°C, followed by operating according to SP Kit(Rabbit) (sp-0023) instructions and DAB staining.

## PRODUCT SPECIFIC PUBLICATIONS

---

[IF=1.3] Jia Yulin. et al. Correlation between CT spectral quantitative parameters and expression levels of HIF-1 $\alpha$  and ALX1 in non-small cell lung cancer. MEDICINE. 2024 Nov;103(48):e40508 IHC ; Human . 39612428