

**bs-4370R****[ Primary Antibody ]****ZNF286B Rabbit pAb****BioSS**  
**ANTIBODIES**

www.bioss.com.cn

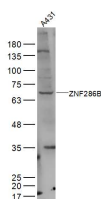
sales@bioss.com.cn

techsupport@bioss.com.cn

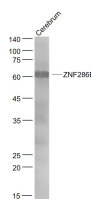
400-901-9800

**— DATASHEET —**

<b>Host:</b> Rabbit	<b>Isotype:</b> IgG	<b>Applications:</b> WB (1:500-2000)
<b>Clonality:</b> Polyclonal		<b>Reactivity:</b> Human, Mouse (predicted: Rabbit)
<b>GeneID:</b> 729288	<b>SWISS:</b> P0CG31	
<b>Target:</b> ZNF286B		
<b>Immunogen:</b> KLH conjugated synthetic peptide derived from human ZNF286B: 51-150/522.		<b>Predicted MW.:</b> 60 kDa
<b>Purification:</b> affinity purified by Protein A		<b>Subcellular Location:</b> Nucleus
<b>Concentration:</b> 1mg/ml		
<b>Storage:</b> Preservative: 0.02% Proclin300, Constituents: 1% BSA, 0.01M PBS, pH7.4. Shipped at 4°C. Store at -20°C for one year. Avoid repeated freeze/thaw cycles.		
<b>Background:</b> ZNF286B (Zinc Finger Protein 286B) is a Protein Coding gene. GO annotations related to this gene include transcription factor activity, sequence-specific DNA binding. An important paralog of this gene is ENSG00000255104.		

**— VALIDATION IMAGES —**

Sample: A431(Human) Cell Lysate at 30 ug  
Primary: Anti-ZNF286B (bs-4370R) at 1/300  
dilution Secondary: IRDye800CW Goat Anti-  
Rabbit IgG at 1/20000 dilution Predicted band  
size: 60 kD Observed band size: 68 kD



Sample: Cerebrum (Mouse) Lysate at 40 ug  
Primary: Anti- ZNF286B (bs-4370R) at 1/1000  
dilution Secondary: IRDye800CW Goat Anti-  
Rabbit IgG at 1/20000 dilution Predicted band  
size: 60 kD Observed band size: 60 kD