

ZNF25 Rabbit pAb

Catalog Number: bs-4368R

Target Protein: ZNF25

Concentration: 1mg/ml

Form: Liquid

Host: Rabbit

Clonality: Polyclonal

Isotype: IgG

Applications: WB (1:500-2000)

Reactivity: Human

Predicted MW: 54 kDa

Subcellular Nucleus

Locations:

Entrez Gene: 219749

Swiss Prot: P17030

Source: KLH conjugated synthetic peptide derived from human ZNF25: 31-130/456.

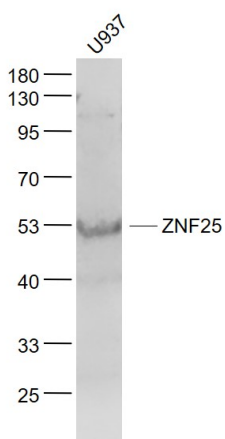
Purification: affinity purified by Protein A

Storage: Preservative: 0.02% Proclin300, Constituents: 1% BSA, 0.01M PBS, pH7.4.

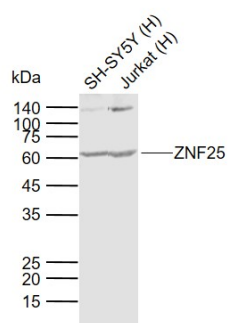
Shipped at 4°C. Store at -20°C for one year. Avoid repeated freeze/thaw cycles.

Background: ZNF25 (Zinc Finger Protein 25) is a Protein Coding gene. Among its related pathways are Gene Expression. GO annotations related to this gene include nucleic acid binding. An important paralog of this gene is ZNF33B.

VALIDATION IMAGES



Sample: U937(Human) Cell Lysate at 30 ug Primary: Anti- ZNF25 (bs-4368R) at 1/1000 dilution Secondary: IRDye800CW Goat Anti-Rabbit IgG at 1/20000 dilution Predicted band size: 54 kD Observed band size: 53 kD



Sample: Lane 1: Human SH-SY5Y cell lysates Lane 2: Human Jurkat cell lysates Primary: Anti-ZNF25 (bs-4368R) at 1/1000 dilution Secondary: IRDye800CW Goat Anti-Rabbit IgG at 1/20000 dilution Predicted band size: 54 kDa Observed band size: 62 kDa