

ZNF221 Rabbit pAb

Catalog Number: bs-4367R

Target Protein: ZNF221

Concentration: 1mg/ml

Form: Liquid

Host: Rabbit

Clonality: Polyclonal

Isotype: IgG

Applications: WB (1:500-2000)

Reactivity: Human

Predicted MW: 71 kDa

Subcellular Nucleus

Locations:

Entrez Gene: 7638

Swiss Prot: Q9UK13

Source: KLH conjugated synthetic peptide derived from human ZNF221: 101-200/617.

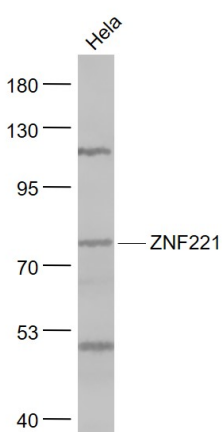
Purification: affinity purified by Protein A

Storage: Preservative: 0.02% Proclin300, Constituents: 1% BSA, 0.01M PBS, pH7.4.

Shipped at 4°C. Store at -20°C for one year. Avoid repeated freeze/thaw cycles.

Background: ZNF221 (Zinc Finger Protein 221) is a Protein Coding gene. Among its related pathways are Gene Expression. GO annotations related to this gene include nucleic acid binding. An important paralog of this gene is ZNF224.

VALIDATION IMAGES



Sample: HeLa(Human) Cell Lysate at 30 ug Primary: Anti- ZNF221 (bs-4367R) at 1/1000 dilution Secondary: IRDye800CW Goat Anti-Rabbit IgG at 1/20000 dilution Predicted band size: 71 kD Observed band size: 72 kD