

bs-4360R**[Primary Antibody]****ZNF692 Rabbit pAb****BioSS**
ANTIBODIES

www.bioss.com.cn

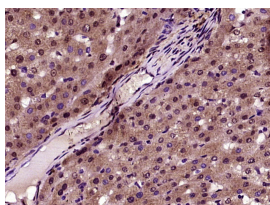
sales@bioss.com.cn

techsupport@bioss.com.cn

400-901-9800

— DATASHEET —

Host: Rabbit	Isotype: IgG	Applications: IHC-P (1:100-500) IHC-F (1:100-500) IF (1:100-500) Reactivity: Human Predicted MW.: 57 kDa Subcellular Location: Nucleus
Clonality: Polyclonal		
GeneID: 55657	SWISS: Q9BU19	
Target: ZNF692		
Immunogen: KLH conjugated synthetic peptide derived from human ZNF692: 111-210/519.		
Purification: affinity purified by Protein A		
Concentration: 1mg/ml		
Storage: Preservative: 0.02% Proclin300, Constituents: 1% BSA, 0.01M PBS, pH7.4. Shipped at 4°C. Store at -20°C for one year. Avoid repeated freeze/thaw cycles.		
Background: ZNF692 (Zinc Finger Protein 692) is a Protein Coding gene. Among its related pathways are Gene Expression. An important paralog of this gene is ZFP91-CNTF.		

— VALIDATION IMAGES —

Paraformaldehyde-fixed, paraffin embedded (Human liver); Antigen retrieval by boiling in sodium citrate buffer (pH6.0) for 15min; Block endogenous peroxidase by 3% hydrogen peroxide for 20 minutes; Blocking buffer (normal goat serum) at 37°C for 30min; Antibody incubation with (ZNF692) Polyclonal Antibody, Unconjugated (bs-4360R) at 1:400 overnight at 4°C, followed by operating according to SP Kit(Rabbit) (sp-0023) instructions and DAB staining.

— SELECTED CITATIONS —

- **[IF=2.2]** Liu Yuming. et al. ZNF692 promotes the migration and response to immunotherapy of clear cell renal cell carcinoma cells by targeting metabolic pathway. Discover Oncology. 2024 Dec;15(1):1-16 IHC,WB ;Human. 38735008