

**bs-0528R****[ Primary Antibody ]****BioSS**  
ANTIBODIES

www.bioss.com.cn

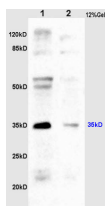
sales@bioss.com.cn

techsupport@bioss.com.cn

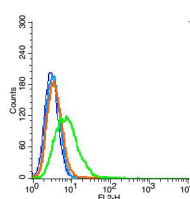
400-901-9800

**CD24 Rabbit pAb****— DATASHEET —**

<b>Host:</b> Rabbit	<b>Isotype:</b> IgG	<b>Applications:</b> <b>WB</b> (1:500-2000) <b>Flow-Cyt</b> (1 $\mu$ g/Test)
<b>Clonality:</b> Polyclonal		<b>Reactivity:</b> Human, Rat (predicted: Mouse)
<b>GeneID:</b> 100133941	<b>SWISS:</b> P25063	
<b>Target:</b> CD24		<b>Predicted MW.:</b> 8 kDa
<b>Immunogen:</b> KLH conjugated synthetic peptide derived from human CD24 Propeptide: 60-80/80.		<b>Subcellular Location:</b> Cell membrane
<b>Purification:</b> affinity purified by Protein A		
<b>Concentration:</b> 1mg/ml		
<b>Storage:</b> 0.01M TBS (pH7.4) with 1% BSA, 0.02% Proclin300 and 50% Glycerol. Shipped at 4°C. Store at -20°C for one year. Avoid repeated freeze/thaw cycles.		
<b>Background:</b> This gene encodes a sialoglycoprotein that is expressed on mature granulocytes and B cells and modulates growth and differentiation signals to these cells. The precursor protein is cleaved to a short 32 amino acid mature peptide which is anchored via a glycosyl phosphatidylinositol (GPI) link to the cell surface. This gene was missing from previous genome assemblies, but is properly located on chromosome 6. Non-transcribed pseudogenes have been designated on chromosomes 1, 15, 20, and Y. Alternative splicing results in multiple transcript variants. [provided by RefSeq, Apr 2014]		

**— VALIDATION IMAGES —**

Sample: Colon carcinoma (Human) lysate at 30 $\mu$ g; Heart(Rat) lysates, 30 $\mu$ g; Primary: Anti-CD24 (bs-0528R) at 1:200 dilution; Secondary: HRP conjugated Goat-Anti-Rabbit IgG(bs-0295G-HRP) at 1: 3000; Predicted band size : 8kD  
Observed band size : 35kD



Blank control: A549 (blue). Primary Antibody: Rabbit Anti-CD24 antibody(bs-0528R), Dilution: 1 $\mu$ g in 100  $\mu$ L 1X PBS containing 0.5% BSA; Isotype Control Antibody: Rabbit IgG(bs-0295G), used under the same conditions; Secondary Antibody: Goat anti-rabbit IgG-PE(white blue), Dilution: 1:200 in 1 X PBS containing 0.5% BSA. Protocol The cells were fixed with 2% paraformaldehyde (10 min) . Primary antibody (bs-0528R, 1 $\mu$ g /1x10<sup>6</sup> cells) were incubated for 30 min on the ice, followed by 1 X PBS containing 0.5% BSA + 1 0% goat serum (15 min) to block non-specific protein-protein interactions. Then the Goat Anti-rabbit IgG/PE antibody was added into the blocking buffer mentioned above to react with the primary antibody at 1/200 dilution for 30 min on ice. Acquisition of 20,000 events was performed.

## — SELECTED CITATIONS —

---

- **[IF=4.103]** Qi Sun. et al. Denosumab alleviates intervertebral disc degeneration adjacent to lumbar fusion by inhibiting endplate osteochondral remodeling and vertebral osteoporosis in ovariectomized rats. *Arthritis Res Ther.* 2021 Dec;23(1):1-16 IHC ;Rat. 34049577
- **[IF=3.23]** Khan, Mohammed I., et al. "Comparative Gene Expression Profiling of Primary and Metastatic Renal Cell Carcinoma Stem Cell-Like Cancer Cells." *PLOS ONE* 11.11 (2016): e0165718. ICC ;="Human". 27812180
- **[IF=3.17]** Szafarowski T et al. Assessment of cancer stem cell marker expression in primary head and neck squamous cell carcinoma shows prognostic value for aldehyde dehydrogenase (ALDH1A1). *Eur J Pharmacol.* 2020 Jan 15;867:172837. IF ;Human. 31811857
- **[IF=1.56]** Wang, Xuming, et al. "Characterization of sphere-forming cells with stem-like properties from the gastric cancer cell lines MKN45 and SGC7901." *Molecular Medicine Reports* 10.6 (2014): 2937-2941. FCM ;="Human". 25270642