

**bs-0080R****[ Primary Antibody ]**

**Bioss**  
ANTIBODIES

www.bioss.com.cn

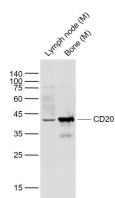
sales@bioss.com.cn

techsupport@bioss.com.cn

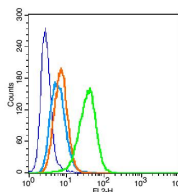
400-901-9800

**CD20 Rabbit pAb****— DATASHEET —**

<b>Host:</b> Rabbit <b>Clonality:</b> Polyclonal <b>GeneID:</b> 931 <b>Target:</b> CD20 <b>Immunogen:</b> KLH conjugated synthetic peptide derived from human CD20: 133-182/297. < Cytoplasmic > <b>Purification:</b> affinity purified by Protein A <b>Concentration:</b> 1mg/ml <b>Storage:</b> 0.01M TBS (pH7.4) with 1% BSA, 0.02% Proclin300 and 50% Glycerol. Shipped at 4°C. Store at -20°C for one year. Avoid repeated freeze/thaw cycles. <b>Background:</b> CD20 is a non glycosylated protein with a molecular weight of 35 or 37 kDa depending on the degree of phosphorylation. Although not a member of the tetraspanin superfamily of cell surface receptors, it crosses the cell membrane four times. The CD20 antigen is present on human pre B lymphocytes and on B lymphocytes at all stages of maturation, except on plasma cells. Low level expression of the CD20 antigen has been detected on normal T lymphocytes. The CD20 molecule is involved in regulation of B cell differentiation, presumably via its reported function as a Ca++ channel subunit.	<b>Isotype:</b> IgG <b>SWISS:</b> P11836	<b>Applications:</b> <b>WB</b> (1:500-2000) <b>Flow-Cyt</b> (1µg /Test) <b>ELISA</b> (1:5000-10000) <b>Reactivity:</b> Mouse (predicted: Human, Rat) <b>Predicted MW.:</b> 33 kDa <b>Subcellular Location:</b> Cell membrane
---	---	---

**— VALIDATION IMAGES —**

Sample: Lane 1: Lymph node (Mouse) Lysate at 40 ug  
 Lane 2: Bone (Mouse) Lysate at 40 ug  
 Primary: Anti-CD20 (bs-0080R) at 1/1000 dilution  
 Secondary: IRDye800CW Goat Anti-Rabbit IgG at 1/20000 dilution  
 Predicted band size: 43 kD  
 Observed band size: 43 kD



Blank control: U937 (blue). Primary Antibody: Rabbit Anti- CD20 antibody(bs-0080R), Dilution: 1µg in 100 µL 1X PBS containing 0.5% BSA; Isotype Control Antibody: Rabbit IgG(orange), used under the same conditions ); Secondary Antibody: Goat anti-rabbit IgG-PE(white blue), Dilution: 1:200 in 1 X PBS containing 0.5% BSA. Protocol The cells were fixed with 2% paraformaldehyde (10 min) . Primary antibody (bs-0080R, 1µg /1x10<sup>6</sup> cells) were incubated for 30 min on the ice, followed by 1 X PBS containing 0.5% BSA + 1 0% goat serum (15 min) to block non-specific protein-protein interactions. Then the Goat Anti-rabbit IgG/PE antibody was added into the blocking buffer mentioned above to react with the primary antibody at 1/200 dilution for 30 min on ice. Acquisition of 20,000 events was performed.

**— SELECTED CITATIONS —**

- **[IF=17.694]** Lei, Xinyuan. et al. Mitochondrial fission induces immunoescape in solid tumors through decreasing MHC-I

Important Note: This product as supplied is intended for research use only, not for use in human, therapeutic or diagnostic applications.

surface expression. NAT COMMUN. 2022 Jul;13(1):1-16 IHC ;Mouse. 35794100

- **[IF=15.9]** Bandarigoda N. Somatilaka. et al. STING activation reprograms the microenvironment to sensitize NF1-related malignant peripheral nerve sheath tumors for immunotherapy. J CLIN INVEST. 2024 Mar;: IHC ;Mouse. 38502231
- **[IF=3.514]** Liu Y et al. Activation of the IL-6/JAK2/STAT3 pathway induces plasma cell mastitis in mice.Cytokine. 2018 Oct;110:150-158. IHC ;Mouse. 29751177
- **[IF=3.4]** Vallejo-Cremades Mayte. et al. Toll-like receptors ligand immunomodulators for the treatment congenital diaphragmatic hernia. ORPHANET J RARE DIS. 2024 Dec;19(1):1-16 IHC ;Rat. 39425191
- **[IF=1.665]** Ane M. Andres. et al. Graft infusion of adipose - derived mesenchymal stromal cells to prevent rejection in experimental intestinal transplantation: A feasibility study. 2021 Feb 05 IHC ;Rat. 33465824