

bs-8681R**[Primary Antibody]**

Spermine synthase Rabbit pAb

Bioss
ANTIBODIES

www.bioss.com.cn

sales@bioss.com.cn

techsupport@bioss.com.cn

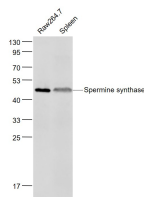
400-901-9800

— DATASHEET —

Host: Rabbit	Isotype: IgG
Clonality: Polyclonal	
GeneID: 6611	SWISS: P52788
Target: Spermine synthase	
Immunogen: KLH conjugated synthetic peptide derived from human Spermine synthase: 245-350/366.	
Purification: affinity purified by Protein A	
Concentration: 1mg/ml	
Storage: 0.01M TBS (pH7.4) with 1% BSA, 0.02% Proclin300 and 50% Glycerol. Shipped at 4°C. Store at -20°C for one year. Avoid repeated freeze/thaw cycles.	
Background: Spermine synthase catalyzes the production of spermine from spermidine. Spermine, a polyamine ubiquitously present in most organisms, is essential for normal cell growth and differentiation. Because absence of spermine increases sensitivity of cells to anti-tumor agents, spermine synthase (and other polyamine biosynthesis) is an attractive target for anti-neoplastic therapy.	

Applications: WB (1:500-2000)**Reactivity:** Mouse
(predicted: Human,
Rat, Rabbit, Cow, Dog,
Horse)**Predicted
MW.:** 41 kDa

— VALIDATION IMAGES —



Sample: Raw264.7 (Mouse) Cell Lysate at 30 ug
Spleen (Mouse) Lysate at 40 ug Primary: Anti-Spermine synthase (bs-8681R) at 1/1000 dilution
Secondary: IRDye800CW Goat Anti-Rabbit IgG at 1/20000 dilution Predicted band size: 41 kD
Observed band size: 46 kD