

---

## CD86 Recombinant Rabbit mAb

Catalog Number: bsm-43589R

Target Protein: CD86

Concentration: 1mg/ml

Form: Size : 25ul/50ul/100ul/200ul

Liquid

Size : 200ug (PBS only)

Lyophilized

Note: Centrifuge tubes before opening. Reconstitute the lyophilized product in distilled water. Optimal concentration should be determined by the end user.

Host: Rabbit

Clonality: Recombinant

Clone No.: 8F6

Isotype: IgG

Applications: WB (1:500-2000), Flow-Cyt (1ug/Test), ICC/IF (1:50-200)

Reactivity: Human

Predicted MW: 37 kDa

Subcellular Cell membrane

Locations:

Entrez Gene: 942

Swiss Prot: P42081

Source: Recombinant human CD86 protein: 24-239/329.

Purification: affinity purified by Protein A

Storage: Size : 25ul/50ul/100ul/200ul

0.01M TBS (pH7.4) with 1% BSA, 0.02% Proclin300 and 50% Glycerol.

Size : 200ug (PBS only)

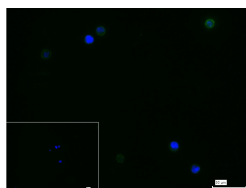
0.01M PBS

Shipped at 4°C. Store at -20°C for one year. Avoid repeated freeze/thaw cycles.

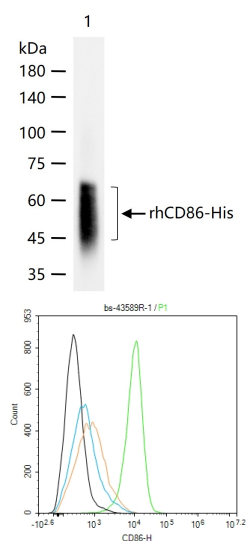
**Background:** This gene encodes a type I membrane protein that is a member of the immunoglobulin superfamily. This protein is expressed by antigen-presenting cells, and it is the ligand for two proteins at the cell surface of T cells, CD28 antigen and cytotoxic T-lymphocyte-associated protein 4. Binding of this protein with CD28 antigen is a costimulatory signal for activation of the T-cell. Binding of this protein with cytotoxic T-lymphocyte-associated protein 4 negatively regulates T-cell activation and diminishes the immune response. Alternative

splicing results in several transcript variants encoding different isoforms.[provided by RefSeq, May 2011].

## VALIDATION IMAGES



4% Paraformaldehyde-fixed Daudi (H) cell; Antibody incubation with (CD86) monoclonal Antibody, unconjugated (bsm-43589R) 1:100, 90 min at 37°C; followed by conjugated Goat Anti-Rabbit IgG antibody (green, bs-40295G-FITC) at 37°C for 90 min, DAPI (blue, C02-04002) was used to stain the cell nuclei. PBS instead of the primary antibody was used as the blank control.



200 ng rhCD86-His protein (bs-43589P) per lane probed with CD86 polyclonal antibody respectively, unconjugated (bsm-43589R) at 1:1000 dilution and 4°C overnight incubation. Followed by corresponding conjugated secondary antibody incubation at r.t. for 60 min.

The Daudi(H) cells were incubated in 5%BSA to block non-specific protein-protein interactions (30 min at r.t.). Primary Antibody (green): Rabbit Anti-CD86 antibody (bsm-43589R): 1  $\mu$ g/ $10^6$  cells; Secondary Antibody (white blue): Goat anti-Rabbit IgG-FITC (bs-60295G-FITC): 1  $\mu$ g/test. Isotype Control (orange): Rabbit IgG (bs-0295P). Blank control (black): PBS. Acquisition of 20,000 events was performed.