

bsm-43600R**[Primary Antibody]**

Bioss
ANTIBODIES

www.bioss.com.cn

sales@bioss.com.cn

techsupport@bioss.com.cn

400-901-9800

Osteopontin Recombinant Rabbit mAb

— DATASHEET —

Host: Rabbit
Clonality: Recombinant
GeneID: 6696
Target: Osteopontin
Immunogen: Recombinant human Osteopontin protein: 17-314/314.
Purification: affinity purified by Protein A
Concentration: 1mg/ml
Storage: Size : 25ul/50ul/100ul/200ul
 0.01M TBS (pH7.4) with 1% BSA, 0.02% Proclin300 and 50% Glycerol.
 Size : 200ug (PBS only)
 0.01M PBS
 Shipped at 4°C. Store at -20°C for one year. Avoid repeated freeze/thaw cycles.

Isotype: IgG
CloneNo.: 1D1
SWISS: P10451

Applications: WB (1:500-2000)
IHC-P (1:100-500)
IHC-F (1:100-500)
IF (1:100-500)

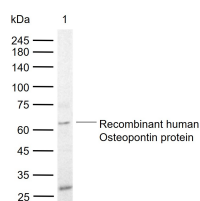
Reactivity: Human

Predicted MW.: 35 kDa

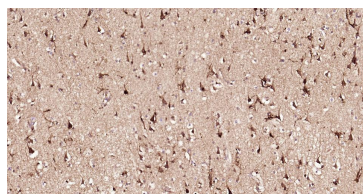
Subcellular Location: Secreted

Background: Osteopontin is the principal phosphorylated glycoprotein of bone and is expressed in a limited number of other tissues including dentine. Osteopontin is produced by osteoblasts under stimulation by calcitriol and binds tightly to hydroxyapatite. It is also involved in the anchoring of osteoclasts to the mineral of bone matrix via the vitronectin receptor, which has specificity for osteopontin. Osteopontin is overexpressed in a variety of cancers, including lung, breast, colorectal, stomach, ovarian, melanoma and mesothelioma.

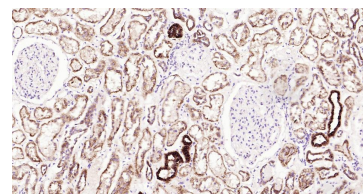
— VALIDATION IMAGES —



Sample: Lane 1: Recombinant human Osteopontin protein, C-His (HEK293)(bs-43600P)
 Primary: Anti-Osteopontin (bsm-43600R) at 1/1000 dilution Secondary: IRDye800CW Goat Anti-Rabbit IgG at 1/20000 dilution Predicted band size: 35 kDa Observed band size: 63 kDa



Paraformaldehyde-fixed, paraffin embedded Human Cerebrum; Antigen retrieval by boiling in sodium citrate buffer (pH6.0) for 15 min; Antibody incubation with Osteopontin Monoclonal Antibody, Unconjugated(bsm-43600R) at 1:200 overnight at 4°C, followed by conjugation to the SP Kit (Rabbit, SP-0023) and DAB (C-0010) staining.



Paraformaldehyde-fixed, paraffin embedded Human Kidney; Antigen retrieval by boiling in sodium citrate buffer (pH6.0) for 15 min; Antibody incubation with Osteopontin Monoclonal Antibody, Unconjugated(bsm-43600R) at 1:200 overnight at 4°C, followed by conjugation to the SP Kit (Rabbit, SP-0023) and DAB (C-0010) staining.