

bsm-41320R**[Primary Antibody]**

BioSS
ANTIBODIES

www.bioss.com.cn

sales@bioss.com.cn

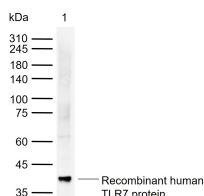
techsupport@bioss.com.cn

400-901-9800

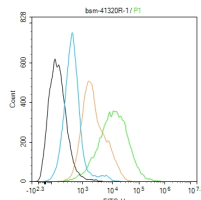
TLR7 Recombinant Rabbit mAb**— DATASHEET —****Host:** Rabbit**Clonality:** Recombinant**GeneID:** 51284**Target:** TLR7**Immunogen:** Recombinant human TLR7 protein: 24-348/1049.**Purification:** affinity purified by Protein A**Concentration:** 1mg/ml

Storage: Size : 25ul/50ul/100ul/200ul
0.01M TBS (pH7.4) with 1% BSA, 0.02% Proclin300 and 50% Glycerol.
Size : 200ug (PBS only)
0.01M PBS
Shipped at 4°C. Store at -20°C for one year. Avoid repeated freeze/thaw cycles.

Background: Key component of innate and adaptive immunity. TLRs (Toll-like receptors) control host immune response against pathogens through recognition of molecular patterns specific of microorganisms. TLR7 is a nucleotide-sensing TLR which is activated by single-stranded RNA. Acts via MYD88 and TRAF6, leading to NF-kappa-B activation, cytokine secretion and the inflammatory response.

Isotype: IgG**CloneNo.:** 8H7**SWISS:** Q9NYK1**Applications:** WB (1:500-2000)**Flow-Cyt** (1ug/Test)**Reactivity:** Human (predicted: Mouse, Rat)**Predicted MW.:** 121 kDa**Subcellular Location:** Cell membrane ,Cytoplasm**— VALIDATION IMAGES —**

Sample: Lane 1: Recombinant human TLR7 protein, His(bs-41320P) Primary: Anti-TLR7 (bsm-41320R) at 1/1000 dilution Secondary: IRDye800CW Goat Anti-Rabbit IgG at 1/20000 dilution Predicted band size: 121 kDa Observed band size: 40 kDa



Blank control:THP-1. Primary Antibody (green line): Rabbit Anti-TLR7 antibody (bsm-41320R) Dilution: 1ug/Test; Secondary Antibody (white blue line) : Goat anti-rabbit IgG-FITC Dilution: 0.5ug/Test. Isotype control (orange line) : Normal Rabbit IgG Protocol The cells were incubated in 5%BSA to block non-specific protein-protein interactions for 30 min at room temperature .Cells stained with Primary Antibody for 30 min at room temperature. The secondary antibody used for 40 min at room temperature. Acquisition of 20,000 events was performed.