

**bs-42169R**

**[ Primary Antibody ]**

## MeV H Rabbit pAb

**BioSS**  
ANTIBODIES

www.bioss.com.cn

sales@bioss.com.cn

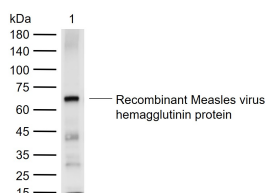
techsupport@bioss.com.cn

400-901-9800

### — DATASHEET —

<b>Host:</b> Rabbit	<b>Isotype:</b> IgG	<b>Applications:</b> WB (1:500-2000)
<b>Clonality:</b> Polyclonal		<b>Reactivity:</b> Measles virus
<b>Target:</b> MeV H		
<b>Immunogen:</b> Recombinant Measles virus hemagglutinin protein: 59-617/617.		
<b>Purification:</b> affinity purified by Protein A		<b>Predicted MW.:</b> 68 kDa
<b>Storage:</b> 0.01M TBS (pH7.4) with 1% BSA, 0.02% Proclin300 and 50% Glycerol. Shipped at 4°C. Store at -20°C for one year. Avoid repeated freeze/thaw cycles.		<b>Subcellular Location:</b> Nucleus
<b>Background:</b> No data available.		

### — VALIDATION IMAGES —



Sample: Lane 1: Recombinant Measles virus hemagglutinin protein, N-His(bs-42169P)  
Primary: Anti-MeV H (bs-42169R) at 1/1000 dilution  
Secondary: IRDye800CW Goat Anti-Rabbit IgG at 1/20000 dilution  
Predicted band size: 68 kDa  
Observed band size: 65 kDa