

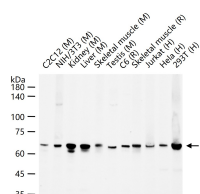
bsm-34316R**[Primary Antibody]****AIF Recombinant Rabbit mAb****BioSS**
ANTIBODIES

www.bioss.com.cn

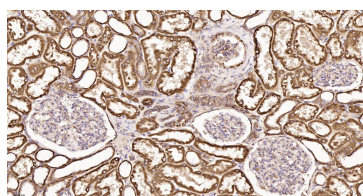
sales@bioss.com.cn

techsupport@bioss.com.cn

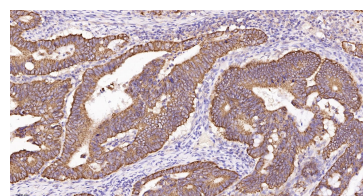
400-901-9800

— DATASHEET —**Host:** Rabbit**Isotype:** IgG**Clonality:** Recombinant**CloneNo.:** 20H17**GeneID:** 9131**SWISS:** Q95831**Target:** AIF**Immunogen:** A synthesized peptide derived from human AIF: 510-565.**Purification:** affinity purified by Protein A**Concentration:** 1mg/ml**Storage:** pH7.4, 150mM NaCl, 0.02% Proclin300 and 50% Glycerol.
Shipped at 4°C. Store at -20°C for one year. Avoid repeated freeze/thaw cycles.**Background:** This gene encodes a flavoprotein essential for nuclear disassembly in apoptotic cells, and it is found in the mitochondrial intermembrane space in healthy cells. Induction of apoptosis results in the translocation of this protein to the nucleus where it affects chromosome condensation and fragmentation. In addition, this gene product induces mitochondria to release the apoptogenic proteins cytochrome c and caspase-9. Mutations in this gene cause combined oxidative phosphorylation deficiency 6, which results in a severe mitochondrial encephalomyopathy. Alternative splicing results in multiple transcript variants. A related pseudogene has been identified on chromosome 10. [provided by RefSeq, May 2010].**Applications:** WB (1:1000-5000)**IHC-P** (1:200-800)**IHC-F** (1:200-800)**IF** (1:200-800)**Reactivity:** Human, Mouse, Rat**Predicted MW.:** 67 kDa**Subcellular Location:** Cytoplasm ,Nucleus**— VALIDATION IMAGES —**

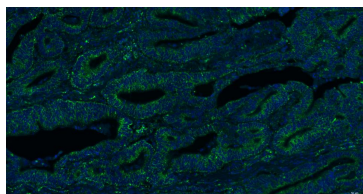
25 ug total protein per lane of various lysates (see on figure) probed with AIF monoclonal antibody, unconjugated (bsm-34316R) at 1:1000 dilution and 4°C overnight incubation. Followed by conjugated secondary antibody incubation at r.t. for 60 min.



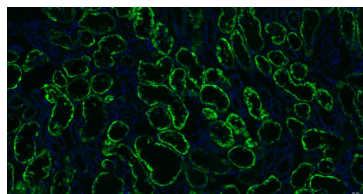
Paraformaldehyde-fixed, paraffin embedded Human Kidney; Antigen retrieval by boiling in sodium citrate buffer (pH6.0) for 15 min; Antibody incubation with AIF Monoclonal Antibody, Unconjugated (bsm-34316R) at 1:200 overnight at 4°C, followed by conjugation to the SP Kit(Rabbit, SP-0023) and DAB (C-0010) staining.



Paraformaldehyde-fixed, paraffin embedded Human Colon Cancer; Antigen retrieval by boiling in sodium citrate buffer (pH6.0) for 15 min; Antibody incubation with AIF Monoclonal Antibody, Unconjugated (bsm-34316R) at 1:200 overnight at 4°C, followed by conjugation to the SP Kit(Rabbit, SP-0023) and DAB (C-0010) staining.



Paraformaldehyde-fixed, paraffin embedded Human Colon cancer; Antigen retrieval by boiling in sodium citrate buffer (pH6.0) for 15 min; Antibody incubation with AIF Monoclonal Antibody, Unconjugated (bsm-34316R) at 1:200 overnight at 4°C, followed by a BF488 conjugated Goat Anti-Rabbit IgG (bs-0295G-



Paraformaldehyde-fixed, paraffin embedded Human kidney; Antigen retrieval by boiling in sodium citrate buffer (pH6.0) for 15 min; Antibody incubation with AIF Monoclonal Antibody, Unconjugated (bsm-34316R) at 1:200 overnight at 4°C, followed by a BF488 conjugated Goat Anti-Rabbit IgG (bs-0295G-

Important Note: This product as supplied is intended for research use only, not for use in human, therapeutic or diagnostic applications.

BF488) antibody at 37°C for 90 minutes, DAPI (blue, C02-04002) was used to stain the cell nuclei.

BF488) antibody at 37°C for 90 minutes, DAPI (blue, C02-04002) was used to stain the cell nuclei.