

bs-60147R**[Primary Antibody]****Bioss**
ANTIBODIES

www.bioss.com.cn

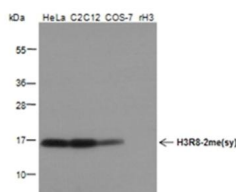
sales@bioss.com.cn

techsupport@bioss.com.cn

400-901-9800

Symmetric Di-Methyl-Histone H3 (Arg8) Rabbit pAb**— DATASHEET —**

Host: Rabbit	Isotype: IgG	Applications: WB (1:500-1:2000)
Clonality: Polyclonal		Reactivity: Human (predicted: Mouse, Rat, Monkey)
Target: Symmetric Di-Methyl-Histone H3 (Arg8)		Subcellular Location: Nucleus
Purification: Antigen affinity purification		
Concentration: 1mg/ml		
Storage: 0.01M TBS (pH7.4) with 1% BSA, 0.02% Proclin300 and 50% Glycerol. Shipped at 4°C. Store at -20°C for one year. Avoid repeated freeze/thaw cycles.		
Background: Modulation of the chromatin structure plays an important role in the regulation of transcription in eukaryotes. The nucleosome, made up of four core histone proteins (H2A, H2B, H3 and H4), is the primary building block of chromatin. The N-terminal tail of core histones undergoes different posttranslational modifications including acetylation, phosphorylation and methylation. These modifications occur in response to cell signal stimuli and have a direct effect on gene expression. In most species, the histone H2B is primarily acetylated at lysines 5, 12, 15 and 20. Histone H3 is primarily acetylated at lysines 9, 14, 18 and 23. Acetylation at lysine 9 appears to have a dominant role in histone deposition and chromatin assembly in some organisms. Phosphorylation at Ser10 of histone H3 is tightly correlated with chromosome condensation during both mitosis and meiosis.		

— VALIDATION IMAGES —

Blocking buffer: 5% NFDM/TBST Primary ab
dilution: 1:2000 Primary ab incubation
condition: 2 hours at room temperature
Secondary ab: Goat Anti-Rabbit IgG H&L (HRP)
Lysate: HeLa, C2C12, COS-7, rH3 Protein loading
quantity: 20 µg Exposure time: 60 s Predicted
MW: 17 kDa Observed MW: 17 kDa