

bs-60191R

[Primary Antibody]

Succinyl-Histone H2B (Lys120) Rabbit pAb

Bioss
ANTIBODIES

www.bioss.com.cn

sales@bioss.com.cn

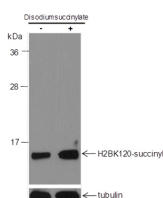
techsupport@bioss.com.cn

400-901-9800

— DATASHEET —

Host: Rabbit	Isotype: IgG	Applications: WB (1:500-1:2000)
Clonality: Polyclonal		Reactivity: Human (predicted: Mouse, Rat)
Target: Succinyl-Histone H2B (Lys120)		Subcellular Location: Nucleus
Purification: Antigen affinity purification		
Concentration: 1mg/ml		
Storage: 0.01M TBS (pH7.4) with 1% BSA, 0.02% Proclin300 and 50% Glycerol. Shipped at 4°C. Store at -20°C for one year. Avoid repeated freeze/thaw cycles.		

— VALIDATION IMAGES —



Blocking buffer: 5% NFDm/TBST Primary ab
dilution: 1:2000 Primary ab incubation
condition: 2 hours at room temperature
Secondary ab: Goat Anti-Rabbit IgG H&L (HRP)
Lysate: (-) HeLa, (+) HeLa+Disodium succinylate
(10mM, 4hr) Protein loading quantity: 20 µg
Exposure time: 60 s Predicted MW: 14 kDa
Observed MW: 14 kDa