

Recombinant human CLDN1 protein, N-Trx-His

Catalog Number: bs-42307P

Concentration: >1mg/ml

Species: Human

AA Seq: 137-211/211

Predicted MW: 23.6

Tags: N-Trx-His

Endotoxin: Not analyzed

Purity: >90% as determined by SDS-PAGE

Purification: AC

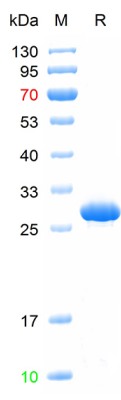
Form: Lyophilized or Liquid

Storage: 20mM Tris-HCl (pH8.0).

Stored at -70°C or -20°C. Avoid repeated freeze/thaw cycles.

Background: Tight junctions represent one mode of cell-to-cell adhesion in epithelial or endothelial cell sheets, forming continuous seals around cells and serving as a physical barrier to prevent solutes and water from passing freely through the paracellular space. These junctions are comprised of sets of continuous networking strands in the outwardly facing cytoplasmic leaflet, with complementary grooves in the inwardly facing extracytoplasmic leaflet. The protein encoded by this gene, a member of the claudin family, is an integral membrane protein and a component of tight junction strands. Loss of function mutations result in neonatal ichthyosis-sclerosing cholangitis syndrome. [provided by RefSeq, Jul 2008]

VALIDATION IMAGES



The purity of the protein is greater than 90% as determined by reducing SDS-PAGE.