

bs-15497R

[Primary Antibody]

CDC5L Rabbit pAb

BioSS
ANTIBODIES

www.bioss.com.cn

sales@bioss.com.cn

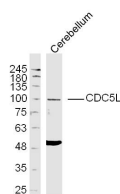
techsupport@bioss.com.cn

400-901-9800

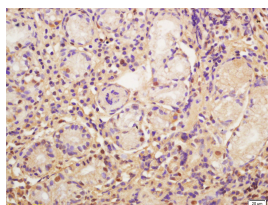
— DATASHEET —

Host: Rabbit	Isotype: IgG	Applications: WB (1:500-2000) IHC-P (1:100-500) IHC-F (1:100-500) IF (1:100-500) Reactivity: Human, Mouse (predicted: Rat, Pig, Sheep, Cow, Horse) Predicted MW.: 92 kDa Subcellular Location: Nucleus
Clonality: Polyclonal		
GeneID: 988	SWISS: Q99459	
Target: CDC5L		
Immunogen: KLH conjugated synthetic peptide derived from human CDC5L: 651-750/802.		
Purification: affinity purified by Protein A		
Concentration: 1mg/ml		
Storage: 0.01M TBS (pH7.4) with 1% BSA, 0.02% Proclin300 and 50% Glycerol. Shipped at 4°C. Store at -20°C for one year. Avoid repeated freeze/thaw cycles.		
Background: The protein encoded by this gene shares a significant similarity with Schizosaccharomyces pombe cdc5 gene product, which is a cell cycle regulator important for G2/M transition. This protein has been demonstrated to act as a positive regulator of cell cycle G2/M progression. It was also found to be an essential component of a non-snRNA spliceosome, which contains at least five additional protein factors and is required for the second catalytic step of pre-mRNA splicing. [provided by RefSeq, Jul 2008].		

— VALIDATION IMAGES —



Sample: Cerebellum (mouse) Lysate at 40 ug
Primary: Anti-CDC5L(bs-15497R) at 1/300
dilution Secondary: IRDye800CW Goat Anti-
Rabbit IgG at 1/20000 dilution Predicted band
size: 92 kD Observed band size: 92 kD



Tissue/cell: human gastric carcinoma; 4%
Paraformaldehyde-fixed and paraffin-
embedded; Antigen retrieval: citrate buffer (0.01M, pH 6.0), Boiling bathing for 15min; Block
endogenous peroxidase by 3% Hydrogen
peroxide for 30min; Blocking buffer (normal goat
serum,C-0005) at 37°C for 20 min; Incubation:
Anti-CDC5L Polyclonal Antibody,
Unconjugated(bs-15497R) 1:200, overnight at
4°C, followed by conjugation to the secondary
antibody(SP-0023) and DAB(C-0010) staining