

bs-43620R**[Primary Antibody]****EphA3 Rabbit pAb****Bioss**
ANTIBODIES

www.bioss.com.cn

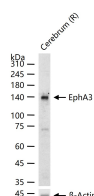
sales@bioss.com.cn

techsupport@bioss.com.cn

400-901-9800

— DATASHEET —

Host: Rabbit	Isotype: IgG	Applications: WB (1:500-2000)
Clonality: Polyclonal		Reactivity: Rat (predicted: Human)
GeneID: 2042	SWISS: P29320	
Target: EphA3		
Immunogen: Recombinant human EphA3 protein: 21-541/983.		Predicted MW.: 106 kDa
Purification: affinity purified by Protein A		Subcellular Location: Secreted ,Cell membrane
Concentration: 1mg/ml		
Storage: 0.01M TBS (pH7.4) with 1% BSA, 0.02% Proclin300 and 50% Glycerol. Shipped at 4°C. Store at -20°C for one year. Avoid repeated freeze/thaw cycles.		
Background: EphA3 is a member of the Ephrin (Eph) family. The Ephrins and Eph-related receptors comprise the largest subfamily of receptor protein-tyrosine kinases and have been implicated in mediating developmental events, especially in the nervous system and in erythropoiesis. Based on their structures and sequence relationships, ephrins are divided into the Ephrin A (EphA) class, which are anchored to the membrane by a glycosylphosphatidylinositol linkage, and the Ephrin B (EphB) class, which are transmembrane proteins. Receptors in the EPH subfamily typically have a single kinase domain and an extracellular region containing a Cys-rich domain and 2 fibronectin type III repeats.		

— VALIDATION IMAGES —

25 ug total protein per lane of various lysates (see on figure) probed with EphA3 polyclonal antibody, unconjugated (bs-43620R) at 1:1000 dilution and 4°C overnight incubation. Followed by conjugated secondary antibody incubation at r.t. for 60 min.