
Beclin 1 Recombinant Rabbit mAb

Catalog Number: bsm-41365R

Target Protein: Beclin 1

Form: Size : 25ul/50ul/100ul/200ul

Liquid

Size : 200ug (PBS only)

Lyophilized

Note: Centrifuge tubes before opening. Reconstitute the lyophilized product in distilled water. Optimal concentration should be determined by the end user.

Host: Rabbit

Clonality: Recombinant

Clone No.: 9A19

Isotype: IgG

Applications: WB (1:100-1000), IHC-P (1:50-200), IHC-F (1:50-200), IF (1:50-200)

Reactivity: Human, Mouse, Rat

Predicted MW: 50 kDa

Subcellular Cell membrane ,Cytoplasm

Locations:

Entrez Gene: 8678

Swiss Prot: Q14457

Source: Recombinant human Beclin 1 protein: 141-450/450.

Purification: affinity purified by Protein A

Storage: Size : 25ul/50ul/100ul/200ul

0.01M TBS (pH7.4) with 1% BSA, 0.02% Proclin300 and 50% Glycerol.

Size : 200ug (PBS only)

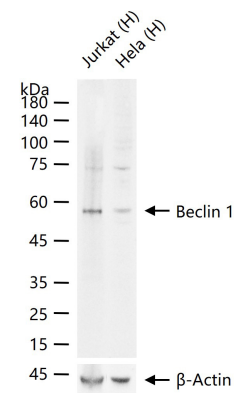
0.01M PBS

Shipped at 4°C. Store at -20°C for one year. Avoid repeated freeze/thaw cycles.

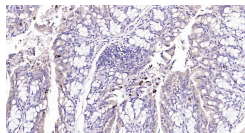
Background: Beclin 1 is the first identified mammalian gene to mediate autophagy and also has tumor suppressor and antiviral function. Autophagy, a process of bulk protein degradation through an autophagosomic lysosomal pathway, is important for differentiation, survival during nutrient deprivation, and normal growth control, and is often defective in tumor cells. Beclin 1 was originally isolated in a yeast two hybrid screen to identify Bcl 2 binding partners and maps to a tumor susceptibility locus on human chromosome 17q21 that is frequently monoallelically deleted in human breast, ovarian and prostate cancer. Beclin 1 encodes an

evolutionarily conserved 52kDa coiled coil protein that is expressed in human muscle, epithelial cells and neurons.

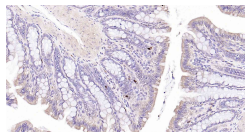
VALIDATION IMAGES



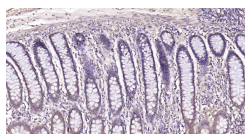
25 ug total protein per lane of various lysates (see on figure) probed with Beclin 1 monoclonal antibody, unconjugated (bsm-41365R) at 1:200 dilution and 4°C overnight incubation. Followed by conjugated secondary antibody incubation at r.t. for 60 min.



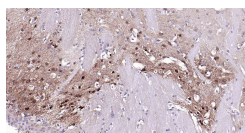
Paraformaldehyde-fixed, paraffin embedded Mouse Colon; Antigen retrieval by boiling in sodium citrate buffer (pH6.0) for 15 min; Antibody incubation with Beclin 1 Monoclonal Antibody, Unconjugated(bsm-41365R) at 1:50 overnight at 4°C, followed by conjugation to the SP Kit (Rabbit, SP-0023) and DAB (C-0010) staining.



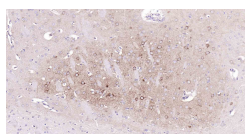
Paraformaldehyde-fixed, paraffin embedded Rat Colon; Antigen retrieval by boiling in sodium citrate buffer (pH6.0) for 15 min; Antibody incubation with Beclin 1 Monoclonal Antibody, Unconjugated(bsm-41365R) at 1:50 overnight at 4°C, followed by conjugation to the SP Kit (Rabbit, SP-0023) and DAB (C-0010) staining.



Paraformaldehyde-fixed, paraffin embedded Human Colon; Antigen retrieval by boiling in sodium citrate buffer (pH6.0) for 15 min; Antibody incubation with Beclin 1 Monoclonal Antibody, Unconjugated(bsm-41365R) at 1:50 overnight at 4°C, followed by conjugation to the SP Kit (Rabbit, SP-0023) and DAB (C-0010) staining.



Paraformaldehyde-fixed, paraffin embedded Mouse Cerebrum; Antigen retrieval by boiling in sodium citrate buffer (pH6.0) for 15 min; Antibody incubation with Beclin 1 Monoclonal Antibody, Unconjugated(bsm-41365R) at 1:50 overnight at 4°C, followed by conjugation to the SP Kit (Rabbit, SP-0023) and DAB (C-0010) staining.



Paraformaldehyde-fixed, paraffin embedded Rat Cerebrum; Antigen retrieval by boiling in sodium citrate buffer (pH6.0) for 15 min; Antibody incubation with Beclin 1 Monoclonal Antibody, Unconjugated(bsm-41365R) at 1:50 overnight at 4°C, followed by conjugation to the SP Kit (Rabbit, SP-0023) and DAB (C-0010) staining.