

bs-8179R**[Primary Antibody]****phospho-Eg5 (Thr926) Rabbit pAb****Bioss**
ANTIBODIES

www.bioss.com.cn

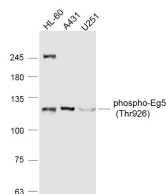
sales@bioss.com.cn

techsupport@bioss.com.cn

400-901-9800

— DATASHEET —

Host: Rabbit	Isotype: IgG	Applications: WB (1:500-2000)
Clonality: Polyclonal		Reactivity: Human (predicted: Cow, Chicken, Horse)
GeneID: 3832	SWISS: P52732	
Target: Eg5 (Thr926)		Predicted MW.: 120 kDa
Immunogen: KLH conjugated Synthesised phosphopeptide derived from human Eg5 around the phosphorylation site of Thr926: GT(p-T)PQ.		Subcellular Location: Cytoplasm
Purification: affinity purified by Protein A		
Concentration: 1mg/ml		
Storage: 0.01M TBS (pH7.4) with 1% BSA, 0.02% Proclin300 and 50% Glycerol. Shipped at 4°C. Store at -20°C for one year. Avoid repeated freeze/thaw cycles.		
Background: Eg5 is a motor protein that belongs to the kinesin-like family. Members of this protein family are known to be involved in various kinds of spindle dynamics. The function of this gene product includes chromosome positioning, centrosome separation and establishing a bipolar spindle during cell mitosis.		

— VALIDATION IMAGES —

Sample: HL-60(Human) Cell Lysate at 30 ug
A431(Human) Cell Lysate at 30 ug U251(Human)
Cell Lysate at 30 ug Primary: Anti-phospho-Eg5
(Thr926) (bs-8179R) at 1/1000 dilution
Secondary: IRDye800CW Goat Anti-Rabbit IgG at
1/20000 dilution Predicted band size: 120 kD
Observed band size: 120 kD