

bs-19632R**[Primary Antibody]****SEN2 Rabbit pAb****BioSS**
ANTIBODIES

www.bioss.com.cn

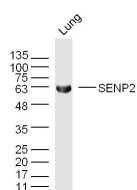
sales@bioss.com.cn

techsupport@bioss.com.cn

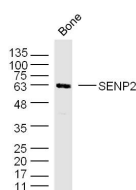
400-901-9800

— DATASHEET —

Host: Rabbit	Isotype: IgG	Applications: WB (1:500-2000)
Clonality: Polyclonal		Reactivity: Mouse (predicted: Human, Rat)
GeneID: 59343	SWISS: Q9HC62	
Target: SENP2		Predicted MW.: 68 kDa
Immunogen: KLH conjugated synthetic peptide derived from human SENP2: 1-100/589.		Subcellular Location: Nucleus
Purification: affinity purified by Protein A		
Concentration: 1mg/ml		
Storage: 0.01M TBS (pH7.4) with 1% BSA, 0.02% Proclin300 and 50% Glycerol. Shipped at 4°C. Store at -20°C for one year. Avoid repeated freeze/thaw cycles.		
Background: SUMO1 (UBL1; MIM 601912) is a small ubiquitin-like protein that can be covalently conjugated to other proteins. SENP2 is one of a group of enzymes that process newly synthesized SUMO1 into the conjugatable form and catalyze the deconjugation of SUMO1-containing species.[supplied by OMIM, Apr 2004]		

— VALIDATION IMAGES —

Protein: lung(mouse) lysate at 40ug; Primary: rabbit Anti-SEN2(bs-19632R) at 1:300;
Secondary: IRDye800CW Goat Anti-Rabbit IgG at 1/20000 dilution Predicted band size: 68 kD
Observed band size: 63 kD



Protein: bone(mouse) lysate at 40ug; Primary: rabbit Anti-SEN2(bs-19632R) at 1:300;
Secondary: IRDye800CW Goat Anti-Rabbit IgG at 1/20000 dilution Predicted band size: 68 kD
Observed band size: 63 kD