

---

## SEC62 Rabbit pAb

Catalog Number: bs-19619R

Target Protein: SEC62

Concentration: 1mg/ml

Form: Liquid

Host: Rabbit

Clonality: Polyclonal

Isotype: IgG

Applications: WB (1:500-2000)

Reactivity: Human, Mouse, Rat (predicted:Rabbit, Pig, Sheep, Cow, Dog, Horse)

Predicted MW: 46 kDa

Subcellular Cytoplasm

Locations:

Entrez Gene: 7095

Swiss Prot: Q99442

Source: KLH conjugated synthetic peptide derived from human SEC62: 251-350/399.

Purification: affinity purified by Protein A

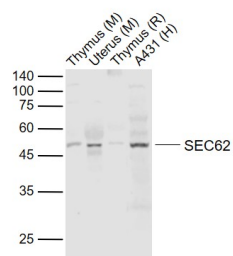
Storage: 0.01M TBS (pH7.4) with 1% BSA, 0.02% Proclin300 and 50% Glycerol.

Shipped at 4°C. Store at -20°C for one year. Avoid repeated freeze/thaw cycles.

**Background:** The Sec61 complex is the central component of the protein translocation apparatus of the endoplasmic reticulum (ER) membrane. The protein encoded by this gene and SEC63 protein are found to be associated with ribosome-free SEC61 complex. It is speculated that Sec61-Sec62-Sec63 may perform post-translational protein translocation into the ER. The Sec61-Sec62-Sec63 complex might also perform the backward transport of ER proteins that are subject to the ubiquitin-proteasome-dependent degradation pathway. The encoded protein is an integral membrane protein located in the rough ER. [provided by RefSeq, Jul 2008]

### VALIDATION IMAGES

---



Sample: Lane 1: Thymus (Mouse) Lysate at 40 ug Lane 2: Uterus (Mouse) Lysate at 40 ug Lane 3: Thymus (Rat) Lysate at 40 ug Lane 4: A431 (Human) Cell Lysate at 30 ug Primary: Anti- SEC62 (bs-19619R) at 1/1000 dilution Secondary: IRDye800CW Goat Anti-Rabbit IgG at 1/20000 dilution Predicted band size: 46 kD Observed band size: 48 kD