

---

## SEC61A Rabbit pAb

Catalog Number: bs-19618R

Target Protein: SEC61A

Concentration: 1mg/ml

Form: Liquid

Host: Rabbit

Clonality: Polyclonal

Isotype: IgG

Applications: WB (1:500-2000)

Reactivity: Human, Mouse (predicted:Rat, Cow, Dog)

Predicted MW: 52 kDa

Subcellular Cytoplasm

Locations:

Entrez Gene: 29927

Swiss Prot: P61619

Source: KLH conjugated synthetic peptide derived from human SEC61A: 181-280/476.

Purification: affinity purified by Protein A

Storage: 0.01M TBS (pH7.4) with 1% BSA, 0.02% Proclin300 and 50% Glycerol.

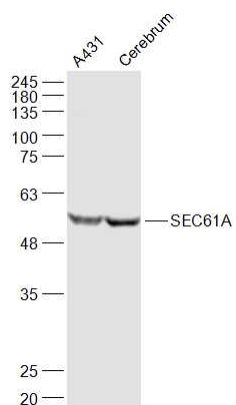
Shipped at 4°C. Store at -20°C for one year. Avoid repeated freeze/thaw cycles.

**Background:** The protein encoded by this gene belongs to the SECY/SEC61- alpha family. It appears to play a crucial role in the insertion of secretory and membrane polypeptides into the endoplasmic reticulum. This protein found to be tightly associated with membrane-bound ribosomes, either directly or through adaptor proteins. This gene encodes an alpha subunit of the heteromeric SEC61 complex, which also contains beta and gamma subunits.

[provided by RefSeq, Jul 2008]

### VALIDATION IMAGES

---



Sample: A431(Human) Cell Lysate at 30 ug Cerebrum (Mouse) Lysate at 40 ug Primary: Anti-SEC61A (bs-19618R) at 1/1000 dilution Secondary: IRDye800CW Goat Anti-Rabbit IgG at 1/20000 dilution Predicted band size: 52 kD Observed band size: 52 kD