

bsm-33040M**[Primary Antibody]****Bioss**
ANTIBODIES

www.bioss.com.cn

sales@bioss.com.cn

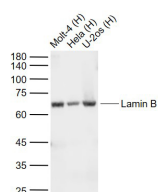
techsupport@bioss.com.cn

400-901-9800

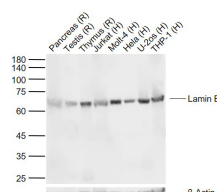
lamin B1 Mouse mAb, Nuclear Loading Control**DATASHEET****Host:** Mouse**Clonality:** Monoclonal**GeneID:** 4001**Target:** lamin B1**Immunogen:** Recombinant human Lamin B Protein: 314-386/586.**Purification:** affinity purified by Protein G**Concentration:** 1mg/ml

Storage: Size : 50ul/100ul/500ul
0.01M TBS (pH7.4) with 1% BSA, 0.02% Proclin300 and 50% Glycerol.
Size : 200ug (PBS only)
0.01M PBS
Shipped at 4°C. Store at -20°C for one year. Avoid repeated freeze/thaw cycles.

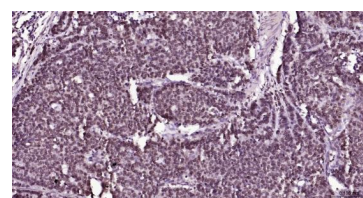
Background: The nuclear lamina consists of a two-dimensional matrix of proteins located next to the inner nuclear membrane. The lamin family of proteins make up the matrix and are highly conserved in evolution. During mitosis, the lamina matrix is reversibly disassembled as the lamin proteins are phosphorylated. Lamin proteins are thought to be involved in nuclear stability, chromatin structure and gene expression. Vertebrate lamins consist of two types, A and B. This gene encodes one of the two B type proteins, B1. Alternative splicing results in transcript variants and a duplication of this gene is associated with autosomal dominant adult-onset leukodystrophy (ADLD). [provided by RefSeq, Oct 2010].

Isotype: IgG1**CloneNo.:** 9C11**SWISS:** P20700**Applications:** WB (1:500-2000)**IHC-P** (1:100-500)**IHC-F** (1:100-500)**IF** (1:100-500)**Reactivity:** Human, Rat**Predicted MW.:** 64 kDa**Subcellular Location:** Nucleus**VALIDATION IMAGES**

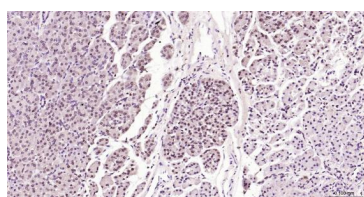
Sample: Lane 1: Human Molt-4 cell lysates Lane 2: Human HeLa cell lysates Lane 3: Human U-2os cell ysates Primary: Anti-Lamin B (bsm-33040M) at 1/1000 dilution Secondary: IRDye800CW Goat Anti-Mouse IgG at 1/20000 dilution Predicted band size: 64 kDa Observed band size: 64 kDa



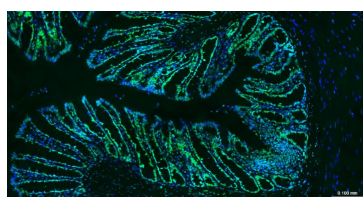
Sample: Lane 1: Rat Pancreas tissue lysates Lane 2: Rat Testis tissue lysates Lane 3: Rat Thymus tissue lysates Lane 4: Human Jurkat cell lysates Lane 5: Human Molt-4 cell lysates Lane 6: Human HeLa cell lysates Lane 7: Human U-2os cell ysates Lane 8: Human THP-1 cell lysates Primary: Anti-Lamin B (bsm-33040M) at 1/1000 dilution Secondary: IRDye800CW Goat Anti-Mouse IgG at 1/20000 dilution Predicted band size: 64 kDa Observed band size: 64 kDa



Paraformaldehyde-fixed, paraffin embedded Human Esophageal Cancer; Antigen retrieval by boiling in sodium citrate buffer (pH6.0) for 15 min; Antibody incubation with lamin B1 Monoclonal Antibody, Unconjugated (ascites of bsm-33040M) at 1:300 overnight at 4°C, followed by conjugation to the bs-40296G-HRP and DAB (C-0010) staining.



Paraformaldehyde-fixed, paraffin embedded Human Pancreas; Antigen retrieval by boiling in



Paraformaldehyde-fixed, paraffin embedded Rat Colon; Antigen retrieval by boiling in sodium

Important Note: This product as supplied is intended for research use only, not for use in human, therapeutic or diagnostic applications.

sodium citrate buffer (pH6.0) for 15 min;
Antibody incubation with lamin B1 Monoclonal
Antibody, Unconjugated (ascites of
bsm-33040M) at 1:300 overnight at 4°C, followed
by conjugation to the bs-40296G-HRP and DAB
(C-0010) staining.

citrate buffer (pH6.0) for 15 min; Antibody
incubation with lamin B1 Monoclonal Antibody,
Unconjugated (bsm-33040M) at 1:200 overnight
at 4°C. Followed by conjugated Goat Anti-Mouse
IgG antibody (green, bs-0296G-BF488), DAPI
(blue, C02-04002) was used to stain the cell
nuclei.

— SELECTED CITATIONS —

- **[IF=5.195]** Yanqiu Sun. et al. Xinfeng capsule inhibits inflammation and oxidative stress in rheumatoid arthritis by up-regulating LINC00638 and activating Nrf2/HO-1 pathway. J ETHNOPHARMACOL. 2023 Jan;301:115839 WB ;Human. 36272490