

bs-42080R**[Primary Antibody]****KCNJ18 Rabbit pAb****Bioss**
ANTIBODIES

www.bioss.com.cn

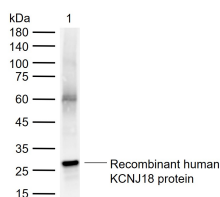
sales@bioss.com.cn

techsupport@bioss.com.cn

400-901-9800

— DATASHEET —

| | | |
|--|----------------------|--|
| Host: Rabbit | Isotype: IgG | Applications: WB (1:500-2000) |
| Clonality: Polyclonal | | Reactivity: Human (predicted: Mouse, Rat) |
| GeneID: 100134444 | SWISS: B7U540 | |
| Target: KCNJ18 | | |
| Immunogen: Recombinant human KCNJ18 protein: 186-433/433. | | Predicted MW.: 43 kDa |
| Purification: affinity purified by Protein A | | Subcellular Location: Cell membrane |
| Concentration: 1mg/ml | | |
| Storage: 0.01M TBS (pH7.4) with 1% BSA, 0.02% Proclin300 and 50% Glycerol. Shipped at 4°C. Store at -20°C for one year. Avoid repeated freeze/thaw cycles. | | |
| Background: Inward rectifier potassium channels are characterized by a greater tendency to allow potassium to flow into the cell rather than out of it. Their voltage dependence is regulated by the concentration of extracellular potassium; as external potassium is raised, the voltage range of the channel opening shifts to more positive voltages. The inward rectification is mainly due to the blockage of outward current by internal magnesium. | | |

— VALIDATION IMAGES —

Sample: Lane 1: Recombinant human KCNJ18 protein, C-His(bs-42080P) Primary: Anti-KCNJ18 (bs-42080R) at 1/1000 dilution Secondary: IRDye800CW Goat Anti-Rabbit IgG at 1/20000 dilution Predicted band size: 43 kDa Observed band size: 27 kDa