

**bs-42111R****[ Primary Antibody ]****CD86 Rabbit pAb****Bioss**  
ANTIBODIES

www.bioss.com.cn

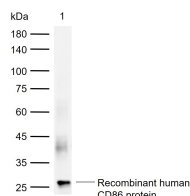
sales@bioss.com.cn

techsupport@bioss.com.cn

400-901-9800

**— DATASHEET —**

|   |                      |  |
|---|----------------------|--|
| <b>Host:</b> Rabbit   | <b>Isotype:</b> IgG  | <b>Applications:</b> WB (1:500-2000)       |
| <b>Clonality:</b> Polyclonal  |                      | <b>Reactivity:</b> Human                   |
| <b>GeneID:</b> 942  | <b>SWISS:</b> P42081 |  |
| <b>Target:</b> CD86   |                      |  |
| <b>Immunogen:</b> Recombinant human CD86 protein: 27-247/329.   |                      | <b>Predicted MW.:</b> 38 kDa               |
| <b>Purification:</b> affinity purified by Protein A   |                      | <b>Subcellular Location:</b> Cell membrane |
| <b>Concentration:</b> 1mg/ml  |                      |  |
| <b>Storage:</b> 0.01M TBS (pH7.4) with 1% BSA, 0.02% Proclin300 and 50% Glycerol.<br>Shipped at 4°C. Store at -20°C for one year. Avoid repeated freeze/thaw cycles.  |                      |  |
| <b>Background:</b> This gene encodes a type I membrane protein that is a member of the immunoglobulin superfamily. This protein is expressed by antigen-presenting cells, and it is the ligand for two proteins at the cell surface of T cells, CD28 antigen and cytotoxic T-lymphocyte-associated protein 4. Binding of this protein with CD28 antigen is a costimulatory signal for activation of the T-cell. Binding of this protein with cytotoxic T-lymphocyte-associated protein 4 negatively regulates T-cell activation and diminishes the immune response. Alternative splicing results in several transcript variants encoding different isoforms.[provided by RefSeq, May 2011]. |                      |  |

**— VALIDATION IMAGES —**

Sample: Lane 1: Recombinant human CD86 protein, C-His(bs-42111P) Primary: Anti-CD86 (bs-42111R) at 1/1000 dilution Secondary: IRDye800CW Goat Anti-Rabbit IgG at 1/20000 dilution Predicted band size: 38 kDa Observed band size: 27 kDa