

## Integrin alpha 5 Rabbit pAb

Catalog Number: bs-0567R

Target Protein: Integrin alpha 5

Concentration: 1mg/ml

Form: Liquid

Host: Rabbit

Clonality: Polyclonal

Isotype: IgG

Applications: WB (1:500-2000)

Reactivity: Human, Mouse (predicted:Rat, Rabbit, Pig, Sheep, Cow, Horse)

Predicted MW: 110 kDa

Detected MW: 135 kDa

Entrez Gene: 3678

Swiss Prot: P08648

Source: KLH conjugated synthetic peptide derived from human Integrin alpha-5 light chain: 1021-1099/1099.

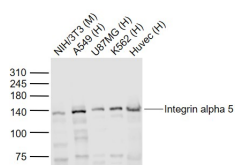
Purification: affinity purified by Protein A

Storage: 0.01M TBS (pH7.4) with 1% BSA, 0.02% Proclin300 and 50% Glycerol.

Shipped at 4°C. Store at -20°C for one year. Avoid repeated freeze/thaw cycles.

**Background:** The product of this gene belongs to the integrin alpha chain family. Integrins are heterodimeric integral membrane proteins composed of an alpha chain and a beta chain. This gene encodes the integrin alpha 5 chain. Alpha chain 5 undergoes post-translational cleavage in the extracellular domain to yield disulfide-linked light and heavy chains that join with beta 1 to form a fibronectin receptor. In addition to adhesion, integrins are known to participate in cell-surface mediated signalling. [provided by RefSeq, Jul 2008]

### VALIDATION IMAGES



Sample: Lane 1: NIH/3T3 (Mouse) Cell Lysate at 30 ug Lane 2: A549 (Human) Cell Lysate at 30 ug Lane 3: U87MG (Human) Cell Lysate at 30 ug Lane 4: K562 (Human) Cell Lysate at 30 ug Lane 5: Huvec (Human) Cell Lysate at 30 ug Primary: Anti-Integrin alpha 5 (bs-0567R) at 1/1000 dilution Secondary: IRDye800CW Goat Anti-Rabbit IgG at 1/20000 dilution Predicted band size: 140 kD Observed band size: 140 kD

## PRODUCT SPECIFIC PUBLICATIONS

---

[IF=3.565] Tao Wang. et al. Preliminary study on SPECT/CT imaging of pancreatic cancer xenografts by targeting integrin  $\alpha 5$  in pancreatic stellate cells. J Cancer. 2021; 12(6): 1729–1733 WB,IHC ; Human . 33613761

[IF=3.848] Song Danyang. et al. Silencing of ER-resident oxidoreductase PDIA3 inhibits malignant biological behaviors of multidrug-resistant gastric cancer. Acta Bioch Bioph Sin. 2021 Aug;; IHC ; Human . 34363072

[IF=2.93] Cui, Li, et al. "The Role of Integrin- $\alpha 5$  in the Proliferation and Odontogenic Differentiation of Human Dental Pulp Stem Cells." Journal of endodontics 40.2 (2014): 235-240. WB ; ="Human" . 24461410

[IF=2.81] Zhang, Rui, et al. "Rho/MRTF-A-Induced Integrin Expression Regulates Angiogenesis in Differentiated Multipotent Mesenchymal Stem Cells." Stem Cells International 2015 (2015). WB ; ="Rat" . 25949242

[IF=2.81] Torkamani, N., et al. "Epidermal Cells Expressing Putative Cell Markers in Nonglabrous Skin Existing in Direct Proximity with the Distal End of the Arrector Pili Muscle." Stem Cells International 2016 (2016). IHC ; ="Mouse" . 27375744