

bs-1315R**[Primary Antibody]****Nogo B Rabbit pAb****BioSS**
ANTIBODIES

www.bioss.com.cn

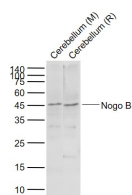
sales@bioss.com.cn

techsupport@bioss.com.cn

400-901-9800

— DATASHEET —

Host: Rabbit	Isotype: IgG	Applications: WB (1:500-2000)
Clonality: Polyclonal		
GeneID: 57142	SWISS: Q9NQC3	
Target: Nogo B		
Immunogen: KLH conjugated synthetic peptide derived from human RTN4 isoform B: 251-357/357.		
Purification: affinity purified by Protein A		Reactivity: Human, Mouse, Rat (predicted: Sheep, Dog)
Concentration: 1mg/ml		Predicted MW.: 39 kDa
Storage: 0.01M TBS (pH7.4) with 1% BSA, 0.02% Proclin300 and 50% Glycerol. Shipped at 4°C. Store at -20°C for one year. Avoid repeated freeze/thaw cycles.		Subcellular Location: Cell membrane ,Cytoplasm
Background: This gene belongs to the family of reticulon encoding genes. Reticulons are associated with the endoplasmic reticulum, and are involved in neuroendocrine secretion or in membrane trafficking in neuroendocrine cells. The product of this gene is a potent neurite outgrowth inhibitor which may also help block the regeneration of the central nervous system in higher vertebrates. Alternatively spliced transcript variants derived both from differential splicing and differential promoter usage and encoding different isoforms have been identified. [provided by RefSeq, Jul 2008].		

— VALIDATION IMAGES —

Sample: Lane 1: Cerebellum (Mouse) Lysate at 40 ug
Lane 2: Cerebellum (Rat) Lysate at 40 ug
Primary: Anti-Nogo B (bs-1315R) at 1/1000 dilution
Secondary: IRDye800CW Goat Anti-Rabbit IgG at 1/20000 dilution
Predicted band size: 44 kD
Observed band size: 45 kD