

bs-1309R**[Primary Antibody]****Syndecan-1 Rabbit pAb****Bioss**
ANTIBODIES

www.bioss.com.cn

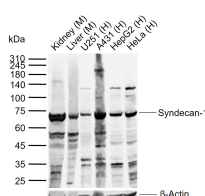
sales@bioss.com.cn

techsupport@bioss.com.cn

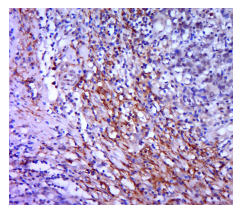
400-901-9800

DATASHEET

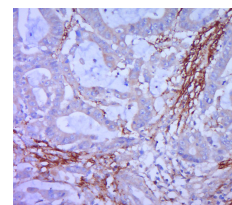
Host: Rabbit	Isotype: IgG	Applications: WB (1:500-2000)
Clonality: Polyclonal		IHC-P (1:100-500)
GeneID: 6382	SWISS: P18827	IHC-F (1:100-500)
Target: Syndecan-1		IF (1:100-500)
Immunogen: KLH conjugated synthetic peptide derived from human CD138: 201-310/310. < Cytoplasmic >		Reactivity: Human, Mouse, Rat, Cow (predicted: Rabbit, Pig, Chicken, Dog, Horse)
Purification: affinity purified by Protein A		
Concentration: 1mg/ml		Predicted MW.: 34 kDa
Storage: 0.01M TBS (pH7.4) with 1% BSA, 0.02% Proclin300 and 50% Glycerol. Shipped at 4°C. Store at -20°C for one year. Avoid repeated freeze/thaw cycles.		Subcellular Location: Secreted ,Cell membrane
Background: The protein encoded by this gene is a transmembrane (type I) heparan sulfate proteoglycan and is a member of the syndecan proteoglycan family. The syndecans mediate cell binding, cell signaling, and cytoskeletal organization and syndecan receptors are required for internalization of the HIV-1 tat protein. The syndecan-1 protein functions as an integral membrane protein and participates in cell proliferation, cell migration and cell-matrix interactions via its receptor for extracellular matrix proteins. Altered syndecan-1 expression has been detected in several different tumor types. While several transcript variants may exist for this gene, the full-length nature of only two have been described to date. These two represent the major variants of this gene and encode the same protein. [provided by RefSeq, Jul 2008]		

VALIDATION IMAGES

Sample: Lane 1: Mouse Kidney tissue lysates
 Lane 2: Mouse Liver tissue lysates Lane 3: Human U251 cell lysates Lane 4: Human A431 cell lysates
 Lane 5: Human HepG2 cell lysates Lane 6: Human HeLa cell lysates
 Primary: Anti-Syndecan-1 (bs-1309R) at 1/1000 dilution
 Secondary: IRDye800CW Goat Anti-Rabbit IgG at 1/20000 dilution
 Predicted band size: 34 kDa
 Observed band size: 74 kDa



Paraformaldehyde-fixed, paraffin embedded (human colon carcinoma); Antigen retrieval by boiling in sodium citrate buffer (pH6.0) for 15min; Block endogenous peroxidase by 3% hydrogen peroxide for 20 minutes; Blocking buffer (normal goat serum) at 37°C for 30min; Antibody incubation with (Syndecan-1) Polyclonal Antibody, Unconjugated (bs-1309R) at 1:400 overnight at 4°C, followed by a conjugated secondary (sp-0023) for 20 minutes and DAB staining.



Paraformaldehyde-fixed, paraffin embedded (human cervical cancer); Antigen retrieval by boiling in sodium citrate buffer (pH6.0) for 15min; Block endogenous peroxidase by 3% hydrogen peroxide for 20 minutes; Blocking buffer (normal goat serum) at 37°C for 30min; Antibody incubation with (Syndecan-1) Polyclonal Antibody, Unconjugated (bs-1309R) at 1:400 overnight at 4°C, followed by a conjugated secondary (sp-0023) for 20 minutes and DAB staining.

SELECTED CITATIONS

- **[IF=5.763]** You Shuang. et al. Recombinant humanized collagen remodels endometrial immune microenvironment of chronic endometritis through macrophage immunomodulation. REGEN BIOMATER. 2023 Apr;; IHC ;Rat. 37122820
- **[IF=5.733]** Jiang Yufei. et al. Osteoprotegerin interacts with syndecan-1 to promote human endometrial stromal decidualization by decreasing Akt phosphorylation. Hum Reprod. 2020 Nov;35(11):2439-2453 IP ;Human. 33047116

Important Note: This product as supplied is intended for research use only, not for use in human, therapeutic or diagnostic applications.

- **[IF=4.831]** Linlin Yanget al. CAMKII α is a targetable driver of multiple myeloma through CaMKII α / Stat3 axis. Aging (Albany NY) . 2020 Jul 13;12(13):13668-13683. IHC,IF ;Human. 32658867
- **[IF=3.6]** Zhenjie Wang. et al. Effect of sodium bicarbonate Ringer's solution on lung injury in rats with traumatic hemorrhagic shock. J BIOCHEM MOL TOXIC. 2023 Dec;;e23608 WB ;Rat,Human. 38084607
- **[IF=4.2]** Biebele Abel. et al. The Degree of Aortic Occlusion in the Setting of Trauma Alters the Extent of Acute Kidney Injury Associated with Mitochondrial Preservation. AM J PHYSIOL-RENAL. 2024 Mar;(Articles in Press): IHC ;Pig. 38450433