

bs-2159R**[Primary Antibody]****Glypican 4 Rabbit pAb****BioSS**
ANTIBODIES

www.bioss.com.cn

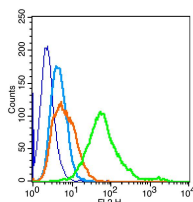
sales@bioss.com.cn

techsupport@bioss.com.cn

400-901-9800

— DATASHEET —

Host: Rabbit Clonality: Polyclonal GeneID: 2239 Target: Glypican 4 Immunogen: KLH conjugated synthetic peptide derived from human Glypican 4: 351-450/556. Purification: affinity purified by Protein A Concentration: 1mg/ml Storage: 0.01M TBS (pH7.4) with 1% BSA, 0.02% Proclin300 and 50% Glycerol. Shipped at 4°C. Store at -20°C for one year. Avoid repeated freeze/thaw cycles. Background: Cell surface heparan sulfate proteoglycans are composed of a membrane-associated protein core substituted with a variable number of heparan sulfate chains. Members of the glypican-related integral membrane proteoglycan family (GRIPS) contain a core protein anchored to the cytoplasmic membrane via a glycosyl phosphatidylinositol linkage. These proteins may play a role in the control of cell division and growth regulation. The GPC4 gene is adjacent to the 3' end of GPC3 and may also play a role in Simpson-Golabi-Behmel syndrome. [provided by RefSeq, Jul 2008]	Isotype: IgG SWISS: O75487	Applications: Flow-Cyt (1µg/Test) Reactivity: Human (predicted: Mouse, Rat, Rabbit, Pig, Cow, Dog, GuineaPig, Horse) Predicted MW.: 57/61 kDa Subcellular Location: Secreted ,Extracellular matrix ,Cell membrane
--	---	--

— VALIDATION IMAGES —

Blank control(blue): U-87MG (fixed with 2% paraformaldehyde (10 min). Primary Antibody:Rabbit Anti-Glypican 4 antibody(bs-2159R), Dilution: 1µg in 100 µL 1X PBS containing 0.5% BSA; Isotype Control Antibody: Rabbit IgG(orange), used under the same conditions); Secondary Antibody: Goat anti-rabbit IgG-PE(white blue), Dilution: 1:200 in 1 X PBS containing 0.5% BSA.

— SELECTED CITATIONS —

- **[IF=6.7]** Giulia Puliatti. et al. Intracellular accumulation of tau oligomers in astrocytes and their synaptotoxic action rely on Amyloid Precursor Protein Intracellular Domain-dependent expression of Glypican-4. PROG NEUROBIOL. 2023 Aug;227:102482 ICC,IHC,WB ;Mouse. 37321444