

bsm-60854R**[Primary Antibody]****Bioss**
ANTIBODIES

www.bioss.com.cn

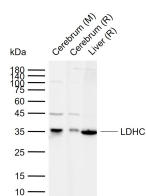
sales@bioss.com.cn

techsupport@bioss.com.cn

400-901-9800

LDHC Recombinant Rabbit mAb**— DATASHEET —**

Host: Rabbit	Isotype: IgG	Applications: WB (1:500-1000) Reactivity: Mouse, Rat (predicted: Human) Predicted MW.: 36 kDa Subcellular Location: Cytoplasm
Clonality: Recombinant	CloneNo.: B12C3	
GeneID: 3948	SWISS: P07864	
Target: LDHC		
Purification: affinity purified by Protein A		
Storage: PBS, Glycerol, BSA. Shipped at 4°C. Store at -20°C for one year. Avoid repeated freeze/thaw cycles.		
Background: Lactate dehydrogenase C catalyzes the conversion of L-lactate and NAD to pyruvate and NADH in the final step of anaerobic glycolysis. LDHC is testis-specific and belongs to the lactate dehydrogenase family. Two transcript variants have been detected which differ in the 5' untranslated region. [provided by RefSeq, Jul 2008].		

— VALIDATION IMAGES —

Sample: Lane 1: Mouse Cerebrum tissue lysates
Lane 2: Rat Cerebrum tissue lysates Lane 3: Rat
Liver tissue lysates Primary: Anti-LDHC
(bsm-60854R) at 1/1000 dilution Secondary:
IRDye800CW Goat Anti-Rabbit IgG at 1/20000
dilution Predicted band size: 36 kDa Observed
band size: 36 kDa