

SHC3 Rabbit pAb

Catalog Number: bs-6199R

Target Protein: SHC3

Concentration: 1mg/ml

Form: Liquid

Host: Rabbit

Clonality: Polyclonal

Isotype: IgG

Applications: WB (1:500-2000)

Reactivity: Mouse (predicted:Human, Rat, Dog, Horse)

Predicted MW: 64 kDa

Entrez Gene: 53358

Swiss Prot: Q92529

Source: KLH conjugated synthetic peptide derived from human SHC3: 501-594/594.

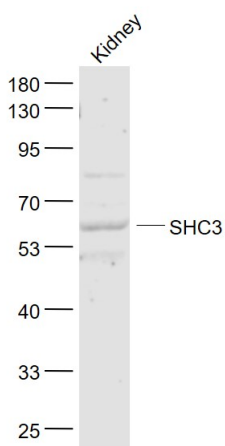
Purification: affinity purified by Protein A

Storage: 0.01M TBS (pH7.4) with 1% BSA, 0.02% Proclin300 and 50% Glycerol.

Shipped at 4°C. Store at -20°C for one year. Avoid repeated freeze/thaw cycles.

Background: Signaling adapter that couples activated growth factor receptors to signaling pathway in neurons. Involved in the signal transduction pathways of neurotrophin-activated Trk receptors in cortical neurons.

VALIDATION IMAGES



Sample: Kidney (Mouse) Lysate at 40 ug Primary: Anti- SHC3 (bs-6199R) at 1/1000 dilution Secondary: IRDye800CW Goat Anti-Rabbit IgG at 1/20000 dilution Predicted band size: 64 kD Observed band size: 64 kD