

bsm-60820R**[Primary Antibody]****BioSS**
ANTIBODIES

www.bioss.com.cn

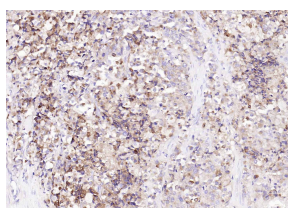
sales@bioss.com.cn

techsupport@bioss.com.cn

400-901-9800

PAP Recombinant Rabbit mAb**— DATASHEET —**

Host: Rabbit	Isotype: IgG	Applications: IHC-P (1:100-500) IHC-F (1:100-500) IF (1:100-500) Reactivity: Human Predicted MW.: 41 kDa Subcellular Location: Secreted ,Cell membrane
Clonality: Recombinant	CloneNo.: 10G17	
GeneID: 55	SWISS: P15309	
Target: PAP		
Purification: affinity purified by Protein A		
Concentration: 1mg/ml		
Storage: PBS, Glycerol, BSA. Shipped at 4°C. Store at -20°C for one year. Avoid repeated freeze/thaw cycles.		
Background: Prostatic Acid Phosphatase is Belongs to the histidine acid phosphatase family. Cellular localization; Secreted and Lysosome membrane. Predominantly localized in the plasma membrane but also detected in intracellular vesicles.		

— VALIDATION IMAGES —

Paraformaldehyde-fixed, paraffin embedded (Human prostate tumor); Antigen retrieval by boiling in sodium citrate buffer (pH6.0) for 15min; Block endogenous peroxidase by 3% hydrogen peroxide for 20 minutes; Blocking buffer (normal goat serum) at 37°C for 30min; Incubation with (PAP) Monoclonal Antibody, Unconjugated (bsm-60820R) at 1:500 overnight at 4°C, followed by operating according to SP Kit(Rabbit) (sp-0023) instructions and DAB staining.