

**bs-5408R****[ Primary Antibody ]****phospho-LRP6 (Thr1479) Rabbit pAb****Bioss**  
**ANTIBODIES**

www.bioss.com.cn

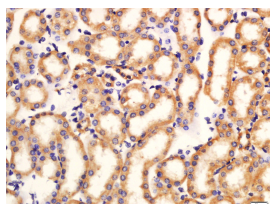
sales@bioss.com.cn

techsupport@bioss.com.cn

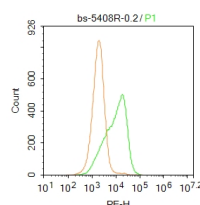
400-901-9800

**— DATASHEET —**

<b>Host:</b> Rabbit	<b>Isotype:</b> IgG	<b>Applications:</b> <b>IHC-P</b> (1:100-500) <b>IHC-F</b> (1:100-500) <b>IF</b> (1:100-500) <b>Flow-Cyt</b> (0.2ug/test)
<b>Clonality:</b> Polyclonal		
<b>GeneID:</b> 4040	<b>SWISS:</b> O75581	
<b>Target:</b> LRP6 (Thr1479)		
<b>Immunogen:</b> KLH conjugated Synthesised phosphopeptide derived from human LRP6 around the phosphorylation site of Thr1479: KG(p-T)YF. < Cytoplasmic >		<b>Reactivity:</b> Human, Mouse (predicted: Rabbit, Pig, Cow, Dog, GuineaPig, Horse)
<b>Purification:</b> affinity purified by Protein A		<b>Predicted MW.:</b> 175 kDa
<b>Concentration:</b> 1mg/ml		<b>Subcellular Location:</b> Cell membrane ,Cytoplasm
<b>Storage:</b> 0.01M TBS (pH7.4) with 1% BSA, 0.02% Proclin300 and 50% Glycerol. Shipped at 4°C. Store at -20°C for one year. Avoid repeated freeze/thaw cycles.		
<b>Background:</b> This gene encodes a member of the low density lipoprotein (LDL) receptor gene family. LDL receptors are transmembrane cell surface proteins involved in receptor-mediated endocytosis of lipoprotein and protein ligands. The protein encoded by this gene functions as a receptor or, with Frizzled, a co-receptor for Wnt and thereby transmits the canonical Wnt/beta-catenin signaling cascade. Through its interaction with the Wnt/beta-catenin signaling cascade this gene plays a role in the regulation of cell differentiation, proliferation, and migration and the development of many cancer types. This protein undergoes gamma-secretase dependent RIP- (regulated intramembrane proteolysis) processing but the precise locations of the cleavage sites have not been determined.[provided by RefSeq, Dec 2009].		

**— VALIDATION IMAGES —**

Tissue/cell: Mouse kidney tissue ; 4% Paraformaldehyde-fixed and paraffin-embedded; Antigen retrieval: citrate buffer ( 0.01M, pH 6.0 ), Boiling bathing for 15min; Block endogenous peroxidase by 3% Hydrogen peroxide for 30min; Blocking buffer (normal goat serum, C-0005) at 37°C for 20 min; Incubation: Anti-LRP6 Polyclonal Antibody, Unconjugated(bs-5408R) 1:200, overnight at 4°C, followed by conjugation to the secondary antibody(SP-0023) and DAB(C-0010) staining



Blank control:A549. Primary Antibody (green line): Rabbit Anti-Phospho-LRP6(Thr1479) antibody (bs-5408R) Dilution: 1µg /10<sup>6</sup> cells; Isotype Control Antibody (orange line): Rabbit IgG . Secondary Antibody : Goat anti-rabbit IgG-PE Dilution:0.2µg /test. Protocol The cells were fixed with 4% PFA (10min at room temperature)and then permeabilized with 20% PBST for 20 min at room temperature. The cells were then incubated in 5% BSA to block non-specific protein-protein interactions for 30 min at at room temperature .Cells stained with Primary Antibody for 30 min at room temperature. The secondary antibody used for 40 min at room temperature. Acquisition of 20,000 events was performed.