

**bs-13735R****[ Primary Antibody ]****SHROOM1 Rabbit pAb****Bioss**  
**ANTIBODIES**

www.bioss.com.cn

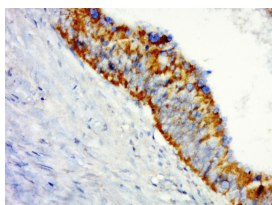
sales@bioss.com.cn

techsupport@bioss.com.cn

400-901-9800

**— DATASHEET —**

<b>Host:</b> Rabbit	<b>Isotype:</b> IgG	<b>Applications:</b> IHC-P (1:100-500)
<b>Clonality:</b> Polyclonal		<b>IHC-F</b> (1:100-500)
<b>GeneID:</b> 134549	<b>SWISS:</b> Q2M3G4	<b>IF</b> (1:100-500)
<b>Target:</b> SHROOM1		<b>Reactivity:</b> Human (predicted: Mouse, Rat, Sheep, Cow, Dog)
<b>Immunogen:</b> KLH conjugated synthetic peptide derived from human SHROOM1: 121-220/852.		
<b>Purification:</b> affinity purified by Protein A		<b>Predicted MW.:</b> 90 kDa
<b>Concentration:</b> 1mg/ml		<b>Subcellular Location:</b> Cytoplasm
<b>Storage:</b> 0.01M TBS (pH7.4) with 1% BSA, 0.02% Proclin300 and 50% Glycerol. Shipped at 4°C. Store at -20°C for one year. Avoid repeated freeze/thaw cycles.		
<b>Background:</b> SHROOM1 is an 852 amino acid protein that contains one ASD1 domain and one ASD2 domain. Localized to both the cytoplasm and the cytoskeleton, SHROOM1 interacts with Actin and is thought to be involved in microtubule assembly during cell elongation, possibly playing a role in the development of the nervous system. Multiple isoforms of SHROOM1 exist due to alternative splicing events. The gene encoding SHROOM1 maps to human chromosome 5, which contains 181 million base pairs and comprises nearly 6% of the human genome. Deletion of the p arm of chromosome 5 leads to Cri du chat syndrome, while deletion of the q arm or of chromosome 5 altogether is common in therapy-related acute myelogenous leukemias and myelodysplastic syndrome.		

**— VALIDATION IMAGES —**

Paraformaldehyde-fixed, paraffin embedded (human colon cancer); Antigen retrieval by boiling in sodium citrate buffer (pH6.0) for 15min; Block endogenous peroxidase by 3% hydrogen peroxide for 20 minutes; Blocking buffer (normal goat serum) at 37°C for 30min; Antibody incubation with (Claudin) Polyclonal Antibody, Unconjugated (bs-13735R) at 1:500 overnight at 4°C, followed by a conjugated secondary (sp-0023) for 20 minutes and DAB staining.

**— SELECTED CITATIONS —**

- **[IF=4.556]** Zhihua Zhao. et al. Suppression of SHROOM1 Improves In Vitro and In Vivo Gene Integration by Promoting Homology-Directed Repair. Int J Mol Sci. 2020 Jan;21(16):5821 WB ;Human. 32823670