

bs-15468R**[Primary Antibody]****HEXB chain B Rabbit pAb****BioSS**
ANTIBODIES

www.bioss.com.cn

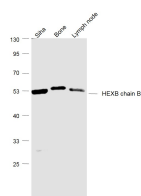
sales@bioss.com.cn

techsupport@bioss.com.cn

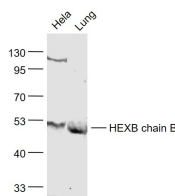
400-901-9800

— DATASHEET —

Host: Rabbit	Isotype: IgG	Applications: WB (1:500-2000)
Clonality: Polyclonal		Reactivity: Human, Mouse (predicted: Rat, Sheep, Cow, Dog)
GeneID: 3074	SWISS: P07686	Predicted MW.: 22/50 kDa
Target: HEXB chain B		Subcellular Location: Cytoplasm
Immunogen: KLH conjugated synthetic peptide derived from human HEXB: 201-300/556.		
Purification: affinity purified by Protein A		
Concentration: 1mg/ml		
Storage: 0.01M TBS (pH7.4) with 1% BSA, 0.02% Proclin300 and 50% Glycerol. Shipped at 4°C. Store at -20°C for one year. Avoid repeated freeze/thaw cycles.		
Background: Hexosaminidase B is the beta subunit of the lysosomal enzyme beta-hexosaminidase that, together with the cofactor GM2 activator protein, catalyzes the degradation of the ganglioside GM2, and other molecules containing terminal N-acetyl hexosamines. Beta-hexosaminidase is composed of two subunits, alpha and beta, which are encoded by separate genes. Both beta-hexosaminidase alpha and beta subunits are members of family 20 of glycosyl hydrolases. Mutations in the alpha or beta subunit genes lead to an accumulation of GM2 ganglioside in neurons and neurodegenerative disorders termed the GM2 gangliosidoses. Beta subunit gene mutations lead to Sandhoff disease (GM2-gangliosidosis type II). [provided by RefSeq, Jul 2008].		

— VALIDATION IMAGES —

Sample: Siha (Human) Cell Lysate at 30 ug Bone (Mouse) Lysate at 40 ug Lymph node (Mouse) Lysate at 40 ug Primary: Anti-HEXB chain B (bs-15468R) at 1/1000 dilution Secondary: IRDye800CW Goat Anti-Rabbit IgG at 1/20000 dilution Predicted band size: 22' 50 kD Observed band size: 22' 50kD



Sample: HeLa(Human) Cell Lysate at 30 ug Lung (Mouse) Lysate at 40 ug Primary: Anti-HEXB chain B (bs-15468R) at 1/1000 dilution Secondary: IRDye800CW Goat Anti-Rabbit IgG at 1/20000 dilution Predicted band size: 22/50kD Observed band size: 22/50 kD