
Connexin 31.1 Rabbit pAb

Catalog Number: bs-13734R

Target Protein: Connexin 31.1

Concentration: 1mg/ml

Form: Liquid

Host: Rabbit

Clonality: Polyclonal

Isotype: IgG

Applications: WB (1:500-2000)

Reactivity: Mouse (predicted:Human, Rat, Rabbit, Sheep, Cow, Dog, Horse)

Predicted MW: 31 kDa

Subcellular: Cell membrane

Locations:

Entrez Gene: 2709

Swiss Prot: O95377

Source: KLH conjugated synthetic peptide derived from human Connexin 31.1: 1-100/273.

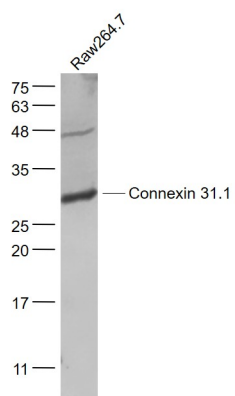
Purification: affinity purified by Protein A

Storage: 0.01M TBS (pH7.4) with 1% BSA, 0.02% Proclin300 and 50% Glycerol.

Shipped at 4°C. Store at -20°C for one year. Avoid repeated freeze/thaw cycles.

Background: The connexin family of proteins form hexameric complexes, called connexons, that facilitate movement of low molecular weight proteins between cells via gap junctions. Connexin proteins share a common topology of four transmembrane α helical domains, two extracellular loops, a cytoplasmic loop and cytoplasmic N- and C-termini. Many of the key functional differences arise from specific amino acid substitutions in the most highly conserved domains; the transmembrane and extracellular regions. Connexin 31.1, Cx31.1 or Gap junction beta-5 protein, is a 271 amino acid protein that is predominantly expressed in skin with lower expression in testis. Expression of connexin 31.1 is required for normal placental development in mice. Down-regulation of the connexin 31.1 gene correlates with head and neck squamous cell carcinomas (HNSCC) and therefore it may be a potential therapeutic target.

VALIDATION IMAGES



Sample: Raw264.7(Mouse) Cell Lysate at 30 ug Primary: Anti- Connexin 31.1 (bs-13734R) at 1/1000 dilution
Secondary: IRDye800CW Goat Anti-Rabbit IgG at 1/20000 dilution Predicted band size: 31 kD Observed band size: 31 kD