

bs-42061R**[Primary Antibody]****CTRC Rabbit pAb****Bioss**
ANTIBODIES

www.bioss.com.cn

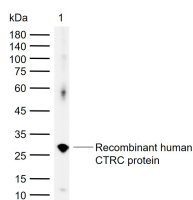
sales@bioss.com.cn

techsupport@bioss.com.cn

400-901-9800

— DATASHEET —

Host: Rabbit	Isotype: IgG	Applications: WB (1:500-2000)
Clonality: Polyclonal		Reactivity: Human
GeneID: 11330	SWISS: Q99895	
Target: CTRC		
Immunogen: Recombinant human CTRC protein: 30-268/268.		Predicted MW.: 29 kDa
Purification: affinity purified by Protein A		Subcellular Location: Extracellular matrix
Concentration: 1mg/ml		
Storage: 0.01M TBS (pH7.4) with 1% BSA, 0.02% Proclin300 and 50% Glycerol. Shipped at 4°C. Store at -20°C for one year. Avoid repeated freeze/thaw cycles.		
Background: This gene encodes a member of the peptidase S1 family. The encoded protein is a serum calcium-decreasing factor that has chymotrypsin-like protease activity. Alternatively spliced transcript variants have been observed, but their full-length nature has not been determined. [provided by RefSeq, Jul 2008]		

— VALIDATION IMAGES —

Sample: Lane 1: Recombinant human CTRC protein, C-His(bs-42061P) Primary: Anti-CTRC (bs-42061R) at 1/1000 dilution Secondary: IRDye800CW Goat Anti-Rabbit IgG at 1/20000 dilution Predicted band size: 29 kDa Observed band size: 27 kDa