

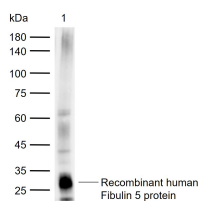
bs-42060R**[Primary Antibody]****Fibulin 5 Rabbit pAb****Bioss**
ANTIBODIES

www.bioss.com.cn

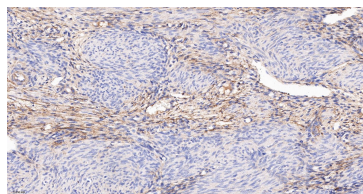
sales@bioss.com.cn

techsupport@bioss.com.cn

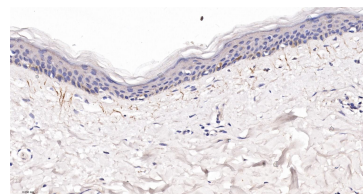
400-901-9800

— DATASHEET —**Host:** Rabbit**Isotype:** IgG**Clonality:** Polyclonal**GeneID:** 10516**SWISS:** Q9UBX5**Target:** Fibulin 5**Immunogen:** Recombinant human Fibulin 5 protein: 199-448/448.**Purification:** affinity purified by Protein A**Concentration:** 1mg/ml**Storage:** 0.01M TBS (pH7.4) with 1% BSA, 0.02% Proclin300 and 50% Glycerol.
Shipped at 4°C. Store at -20°C for one year. Avoid repeated freeze/thaw cycles.**Background:** Fibulin 5: A protein that belongs to a family of extracellular proteins expressed in the basement membranes of blood vessels. Fibulin 5 may be essential for the polymerization of elastin. Missense mutations in FBLN5, the gene that encodes fibulin 5, appear responsible for 1-2% of cases of age-related macular degeneration (AMD). FBLN5 is located on chromosome 14 in band 14q32.1. See also: Fibulin 3. May play a role in vascular growth and maturation during development and in lesions of injured vessels.**Applications:** **WB** (1:500-2000)**IHC-P** (1:100-500)**IHC-F** (1:100-500)**IF** (1:100-500)**Reactivity:** Human**Predicted MW.:** 48 kDa**Subcellular Location:** Secreted**— VALIDATION IMAGES —**

Sample: Lane 1: Recombinant human Fibulin 5 protein, C-His(bs-42060P) Primary: Anti-Fibulin 5 (bs-42060R) at 1/1000 dilution Secondary: IRDye800CW Goat Anti-Rabbit IgG at 1/20000 dilution Predicted band size: 48 kDa Observed band size: 30 kDa



Paraformaldehyde-fixed, paraffin embedded Human Uterus; Antigen retrieval by boiling in sodium citrate buffer (pH6.0) for 15 min; The section was incubated with Fibulin 5 Polyclonal Antibody, Unconjugated (bs-42060R) at 1:200 overnight at 4°C, followed by conjugation to the bs-0295G-HRP and DAB (C-0010) staining.



Paraformaldehyde-fixed, paraffin embedded Human Skin; Antigen retrieval by boiling in sodium citrate buffer (pH6.0) for 15 min; The section was incubated with Fibulin 5 Polyclonal Antibody, Unconjugated (bs-42060R) at 1:200 overnight at 4°C, followed by conjugation to the bs-0295G-HRP and DAB (C-0010) staining.