

## CNN1 Recombinant Rabbit mAb

Catalog Number: bsm-60845R

Target Protein: CNN1

Concentration: 1mg/ml

Form: Liquid

Host: Rabbit

Clonality: Recombinant

Clone No.: 15E5

Isotype: IgG

Applications: WB (1:2000-10000), IHC-P (1:100-500), IHC-F (1:100-500), IF (1:100-500)

Reactivity: Human, Mouse, Rat

Predicted MW: 33 kDa

Subcellular: Cytoplasm

Locations:

Entrez Gene: 1264

Swiss Prot: P51911

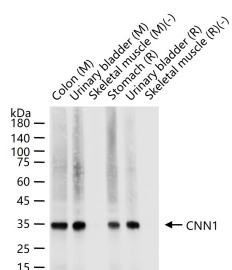
Purification: affinity purified by Protein A

Storage: 0.01M TBS (pH7.4) with 1% BSA, 0.02% Proclin300 and 50% Glycerol.

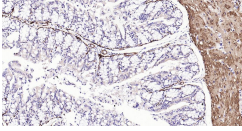
Shipped at 4°C. Store at -20°C for one year. Avoid repeated freeze/thaw cycles.

**Background:** Predicted to enable actin binding activity. Involved in negative regulation of vascular associated smooth muscle cell proliferation. Located in cytoskeleton. [provided by Alliance of Genome Resources, Nov 2021]

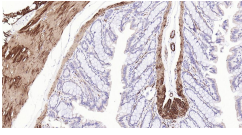
### VALIDATION IMAGES



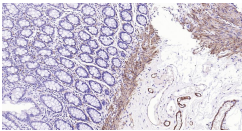
25 ug total protein per lane of various lysates (see on figure) probed with CNN1 monoclonal antibody, unconjugated (bsm-60845R) at 1:10000 dilution and 4°C overnight incubation. Followed by conjugated secondary antibody incubation at r.t. for 60 min.



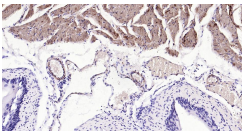
Paraformaldehyde-fixed, paraffin embedded Mouse Colon; Antigen retrieval by boiling in sodium citrate buffer (pH6.0) for 15 min; Antibody incubation with CNN1 Monoclonal Antibody, Unconjugated(bsm-60845R) at 1:200 overnight at 4°C, followed by conjugation to the SP Kit (Rabbit, SP-0023) and DAB (C-0010) staining.



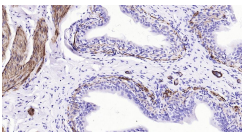
Paraformaldehyde-fixed, paraffin embedded Rat Colon; Antigen retrieval by boiling in sodium citrate buffer (pH6.0) for 15 min; Antibody incubation with CNN1 Monoclonal Antibody, Unconjugated(bsm-60845R) at 1:200 overnight at 4°C, followed by conjugation to the SP Kit (Rabbit, SP-0023) and DAB (C-0010) staining.



Paraformaldehyde-fixed, paraffin embedded Human Colon; Antigen retrieval by boiling in sodium citrate buffer (pH6.0) for 15 min; Antibody incubation with CNN1 Monoclonal Antibody, Unconjugated(bsm-60845R) at 1:200 overnight at 4°C, followed by conjugation to the SP Kit (Rabbit, SP-0023) and DAB (C-0010) staining.



Paraformaldehyde-fixed, paraffin embedded Mouse Bladder; Antigen retrieval by boiling in sodium citrate buffer (pH6.0) for 15 min; Antibody incubation with CNN1 Monoclonal Antibody, Unconjugated(bsm-60845R) at 1:200 overnight at 4°C, followed by conjugation to the SP Kit (Rabbit, SP-0023) and DAB (C-0010) staining.



Paraformaldehyde-fixed, paraffin embedded Rat Bladder; Antigen retrieval by boiling in sodium citrate buffer (pH6.0) for 15 min; Antibody incubation with CNN1 Monoclonal Antibody, Unconjugated(bsm-60845R) at 1:200 overnight at 4°C, followed by conjugation to the SP Kit (Rabbit, SP-0023) and DAB (C-0010) staining.