

bsm-60806R**[Primary Antibody]****BioSS**
ANTIBODIES

www.bioss.com.cn

sales@bioss.com.cn

techsupport@bioss.com.cn

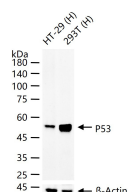
400-901-9800

P53 Recombinant Rabbit mAb**— DATASHEET —****Host:** Rabbit**Isotype:** IgG**Clonality:** Recombinant**CloneNo.:** 3H6**GeneID:** 7157**SWISS:** P04637**Target:** P53**Immunogen:** A synthesized peptide derived from human p53: 360-393.**Purification:** affinity purified by Protein A**Concentration:** 1mg/ml**Storage:** PBS, Glycerol, BSA.

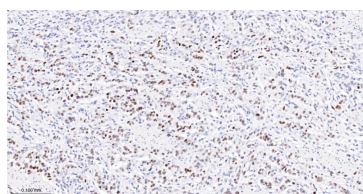
Shipped at 4°C. Store at -20°C for one year. Avoid repeated freeze/thaw cycles.

Background: This gene encodes a tumor suppressor protein containing transcriptional activation, DNA binding, and oligomerization domains. The encoded protein responds to diverse cellular stresses to regulate expression of target genes, thereby inducing cell cycle arrest, apoptosis, senescence, DNA repair, or changes in metabolism. Mutations in this gene are associated with a variety of human cancers, including hereditary cancers such as Li-Fraumeni syndrome. Alternative splicing of this gene and the use of alternate promoters result in multiple transcript variants and isoforms. Additional isoforms have also been shown to result from the use of alternate translation initiation codons (PMIDs: 12032546, 20937277). [provided by RefSeq, Feb 2013].

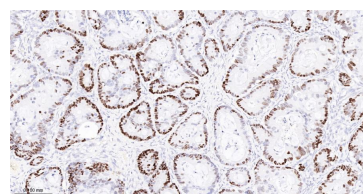
Applications: **WB** (1:1000-5000)
IHC-P (1:100-500)
IHC-F (1:100-500)
IF (1:100-500)
Flow-Cyt (1ug/Test)
ICC/IF (1:100-500)

Reactivity: Human**Predicted MW.:** 43 kDa**Subcellular Location:** Cytoplasm ,Nucleus**— VALIDATION IMAGES —**

25 ug total protein per lane of various lysates (see on figure) probed with P53 monoclonal antibody, unconjugated (bsm-60806R) at 1:1000 dilution and 4°C overnight incubation. Followed by conjugated secondary antibody incubation at r.t. for 60 min.



Paraformaldehyde-fixed, paraffin embedded Human Gastric Cancer; Antigen retrieval by boiling in sodium citrate buffer (pH6.0) for 15 min; The section was incubated with P53 Monoclonal Antibody, Unconjugated (bsm-60806R) at 1:200 overnight at 4°C, followed by conjugation to the bs-0295G-HRP and DAB (C-0010) staining.



Paraformaldehyde-fixed, paraffin embedded Human Ovarian Cancer; Antigen retrieval by boiling in sodium citrate buffer (pH6.0) for 15 min; Antibody incubation with p53 Monoclonal Antibody, Unconjugated (bsm-60806R) at 1:200 overnight at 4°C, followed by conjugation to the bs-0295G-HRP and DAB (C-0010) staining.

— SELECTED CITATIONS —

- **[IF=6]** Joëlle Al-Choboq. et al. The Radiobiological Characterization of Human and Porcine Lens Cells Suggests the Importance of the ATM Kinase in Radiation-Induced Cataractogenesis. CELLS-BASEL. 2023 Jan;12(16):2118 IF ;Human. 37626928