

SARP1 Rabbit pAb

Catalog Number: bs-9478R

Target Protein: SARP1

Concentration: 1mg/ml

Form: Liquid

Host: Rabbit

Clonality: Polyclonal

Isotype: IgG

Applications: WB (1:500-2000)

Reactivity: Human (predicted: Mouse, Rat, Rabbit, Sheep, Cow, Dog)

Predicted MW: 33 kDa

Entrez Gene: 6423

Swiss Prot: Q96HF1

Source: KLH conjugated synthetic peptide derived from human SFRP2/SARP1: 201-295/295.

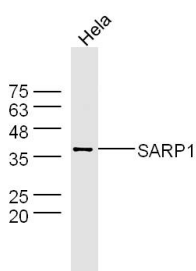
Purification: affinity purified by Protein A

Storage: 0.01M TBS (pH7.4) with 1% BSA, 0.02% Proclin300 and 50% Glycerol.

Shipped at 4°C. Store at -20°C for one year. Avoid repeated freeze/thaw cycles.

Background: This gene encodes a member of the SFRP family that contains a cysteine-rich domain homologous to the putative Wnt-binding site of Frizzled proteins. SFRPs act as soluble modulators of Wnt signaling. Methylation of this gene is a potential marker for the presence of colorectal cancer.

VALIDATION IMAGES



Sample: HeLa (Human) Lysate at 40 ug Primary: Anti-SARP1 (bs-9478R) at 1/300 dilution Secondary: IRDye800CW Goat Anti-Rabbit IgG at 1/20000 dilution Predicted band size: 33 kD Observed band size: 36 kD