

human CD15 (SSEA-1) Mouse mAb

Catalog Number: bsm-30016M

Target Protein: human CD15 (SSEA-1)

Concentration: 1mg/ml

Form: Liquid

Host: Mouse

Clonality: Monoclonal

Clone No.: 15F2

Isotype: IgM

Applications: Flow-Cyt (1:50-100)

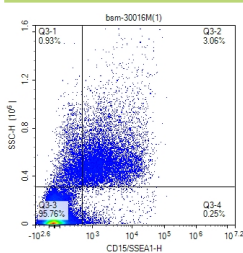
Reactivity: Human

Purification: affinity purified by Protein G

Storage: 0.01M TBS (pH7.4).

Store at 2-8°C for one year. Avoid repeated freeze/thaw cycles.

VALIDATION IMAGES



scatter diagram showing peripheral blood lymphocytes stained with CD15/SSEA1. The cells were incubated with the antibody (bsm-30016M) for 30 min at 22°C. The secondary antibody used for 40 min at room temperature. Acquisition of >10,000 events was performed.